

# RPL31 antibody

Catalog Number: 114889

## Product name

RPL31 antibody

## Specificity

Human, Mouse, Rat; other species not tested.

## Antibody description

RPL31 Rabbit Polyclonal antibody. Positive WB detected in HepG2 cells, mouse liver tissue, NIH/3T3 cells. Positive IF detected in HepG2 cells. Observed molecular weight by Western-blot: 14 kDa

## Preparation

This antibody was obtained by immunization of RPL31 recombinant protein (Accession Number: NM\_000993). Purification method: Antigen affinity purified.

## Formulation

PBS with 0.02% sodium azide and 50% glycerol pH 7.3.

## Storage

Store at -20°C. DO NOT ALIQUOT

## Clonality

Polyclonal

## Ig Type

Rabbit IgG

## Applications

ELISA, WB, IF

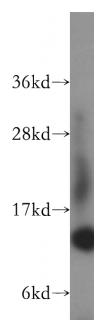
## Dilutions

Recommended Dilution:

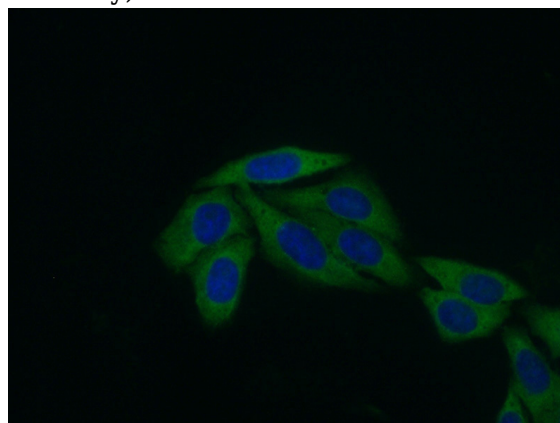
WB: 1:200-1:2000

IF: 1:50-1:500

## Validations



HepG2 cells were subjected to SDS PAGE followed by western blot with Catalog No:114889(RPL31 antibody) at dilution of 1:300



Immunofluorescent analysis of (10% Formaldehyde) fixed HepG2 cells using Catalog No:114889(RPL31 Antibody) at dilution of 1:50 and Alexa Fluor 488-conjugated AffiniPure Goat Anti-Rabbit IgG(H+L)