

RPL28 antibody



Catalog Number: 114885

Product name

RPL28 antibody

Specificity

Human, Mouse, Rat; other species not tested.

Antibody description

RPL28 Rabbit Polyclonal antibody. Positive IF detected in HepG2 cells. Positive WB detected in HeLa cells, NIH/3T3 cells. Observed molecular weight by Western-blot: 16kd

Preparation

This antibody was obtained by immunization of RPL28 recombinant protein (Accession Number: NM_000991). Purification method: Antigen affinity purified.

Formulation

PBS with 0.02% sodium azide and 50% glycerol pH 7.3.

Storage

Store at -20°C. DO NOT ALIQUOT

Clonality

Polyclonal

Ig Type

Rabbit IgG

Applications

ELISA, WB, IF

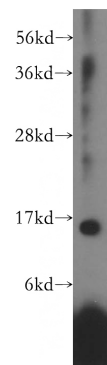
Dilutions

Recommended Dilution:

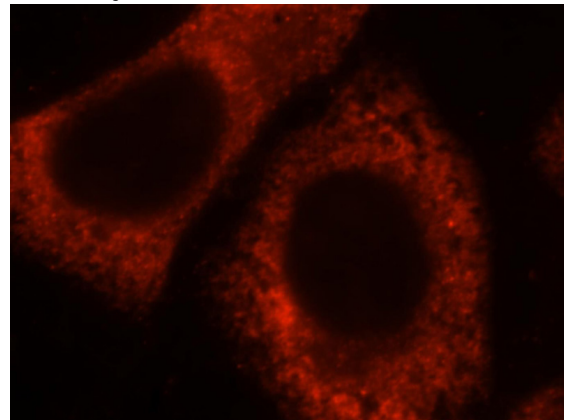
WB: 1:500-1:5000

IF: 1:10-1:100

Validations



HeLa cells were subjected to SDS PAGE followed by western blot with Catalog No:114885(RPL28 antibody) at dilution of 1:1000



Immunofluorescent analysis of HepG2 cells, using RPL28 antibody Catalog No:114885 at 1:25 dilution and Rhodamine-labeled goat anti-rabbit IgG (red).