

# RTEL1 antibody

Catalog Number: 114857

## Product name

RTEL1 antibody

IP: 1:200-1:2000

IF: 1:50-1:500

## Specificity

Human, Mouse, Rat; other species not tested.

## Antibody description

RTEL1 Rabbit Polyclonal antibody. Positive WB detected in BGC-823 cells, C6 cells, HeLa cells, HepG2 cells, mouse brain tissue, mouse testis tissue, PC-3 cells. Positive IP detected in mouse brain tissue. Positive IF detected in HepG2 cells. Observed molecular weight by Western-blot: 133 kDa

## Preparation

This antibody was obtained by immunization of Peptide (Accession Number: NM\_016434). Purification method: Antigen affinity purified.

## Formulation

PBS with 0.1% sodium azide and 50% glycerol pH 7.3.

## Storage

Store at -20°C. DO NOT ALIQUOT

## Clonality

Polyclonal

## Ig Type

Rabbit IgG

## Applications

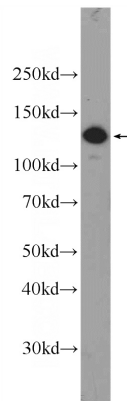
ELISA, WB, IP, IF

## Dilutions

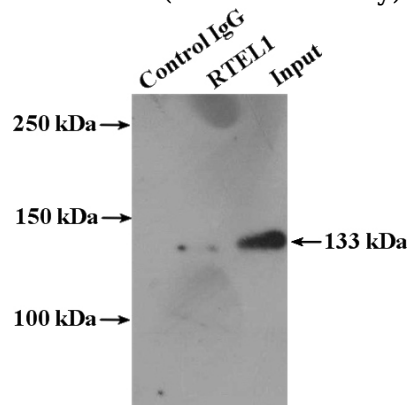
Recommended Dilution:

WB: 1:200-1:2000

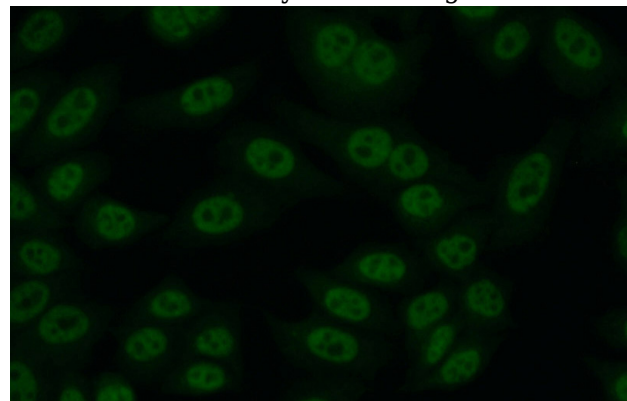
## Validations



BGC-823 cells were subjected to SDS PAGE followed by western blot with Catalog No:114857(RTEL1 Antibody) at dilution of 1:600



IP Result of anti-RTEL1 (IP:Catalog No:114857, 4ug; Detection:Catalog No:114857 1:500) with mouse brain tissue lysate 4000ug.



Immunofluorescent analysis of (10% Formaldehyde) fixed HepG2 cells using Catalog

# RTEL1 antibody



Catalog Number: 114857

---

No:114857(RTEL1 Antibody) at dilution of 1:50

and Alexa Fluor 488-conjugated AffiniPure Goat  
Anti-Rabbit IgG(H+L)