

RSPO2 antibody

Catalog Number: 114851

Product name

RSPO2 antibody

IP: 1:200-1:2000

IHC: 1:50-1:500

Specificity

Human, Mouse, Rat; other species not tested.

Antibody description

RSPO2 Rabbit Polyclonal antibody. Positive WB detected in mouse brain tissue. Positive IP detected in mouse brain tissue. Positive IHC detected in mouse small intestine tissue. Observed molecular weight by Western-blot: 33 kDa

Preparation

This antibody was obtained by immunization of RSPO2 recombinant protein (Accession Number: NM_001317942). Purification method: Antigen affinity purified.

Formulation

PBS with 0.02% sodium azide and 50% glycerol pH 7.3.

Storage

Store at -20°C. DO NOT ALIQUOT

Clonality

Polyclonal

Ig Type

Rabbit IgG

Applications

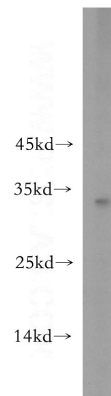
ELISA, WB, IP, IHC

Dilutions

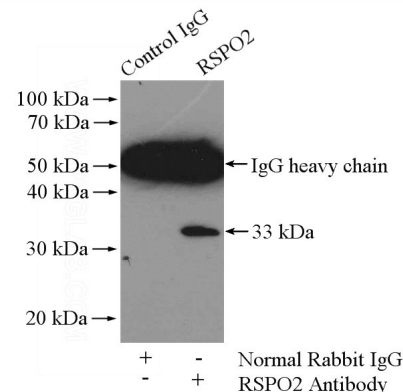
Recommended Dilution:

WB: 1:1000-1:10000

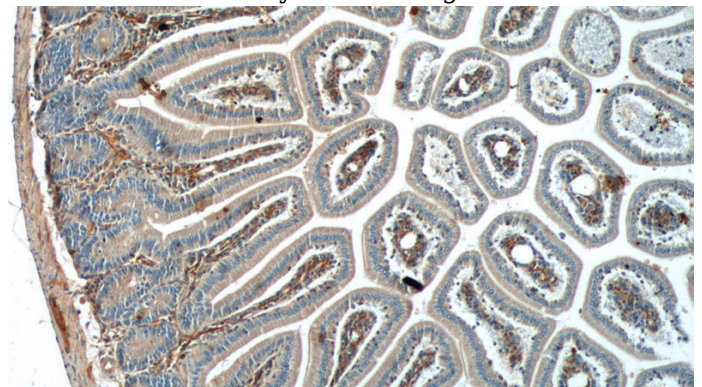
Validations



mouse brain tissue were subjected to SDS PAGE followed by western blot with Catalog No:114851(RSPO2 antibody) at dilution of 1:3000



IP Result of anti-RSPO2 (IP:Catalog No:114851, 4ug; Detection:Catalog No:114851 1:500) with mouse brain tissue lysate 2640ug.

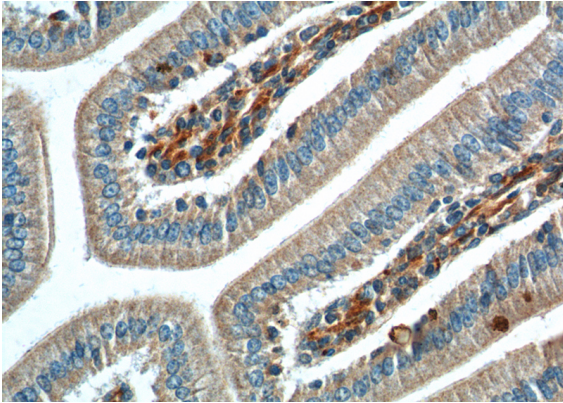


Immunohistochemistry of paraffin-embedded mouse small intestine tissue slide using Catalog

RSPO2 antibody

Catalog Number: 114851

No:114851(RSPO2 Antibody) at dilution of 1:200
(under 10x lens).



Immunohistochemistry of paraffin-embedded
mouse small intestine tissue slide using Catalog
No:114851(RSPO2 Antibody) at dilution of 1:200
(under 40x lens).