

# RSPO1 antibody



Catalog Number: 114850

## Product name

RSPO1 antibody

## Specificity

Human; other species not tested.

## Antibody description

RSPO1 Rabbit Polyclonal antibody. Positive WB detected in human plasma tissue. Observed molecular weight by Western-blot: 29 kDa

## Preparation

This antibody was obtained by immunization of RSPO1 recombinant protein (Accession Number: NM\_001242908). Purification method: Antigen affinity purified.

## Formulation

PBS with 0.1% sodium azide and 50% glycerol pH 7.3.

## Storage

Store at -20°C. DO NOT ALIQUOT

## Clonality

Polyclonal

## Ig Type

Rabbit IgG

## Applications

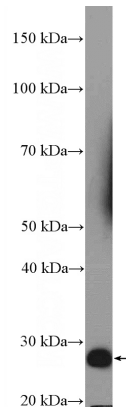
ELISA, WB

## Dilutions

Recommended Dilution:

WB: 1:200-1:1000

## Validations



human plasma tissue were subjected to SDS PAGE followed by western blot with Catalog No:114850(RSPO1 Antibody) at dilution of 1:300