

RPS27L antibody



Catalog Number: 114840

Product name

RPS27L antibody

Specificity

Human, Mouse, Rat; other species not tested.

Antibody description

RPS27L Rabbit Polyclonal antibody. Positive WB detected in SH-SY5Y cells, HepG2 cells, human heart tissue, mouse brain tissue. Positive IF detected in SH-SY5Y cells. Observed molecular weight by Western-blot: 10 kDa

Preparation

This antibody was obtained by immunization of RPS27L recombinant protein (Accession Number: NM_015920). Purification method: Antigen affinity purified.

Formulation

PBS with 0.02% sodium azide and 50% glycerol pH 7.3.

Storage

Store at -20°C. DO NOT ALIQUOT

Clonality

Polyclonal

Ig Type

Rabbit IgG

Applications

ELISA, WB, IF

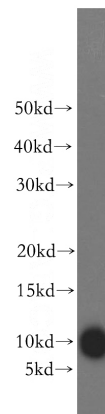
Dilutions

Recommended Dilution:

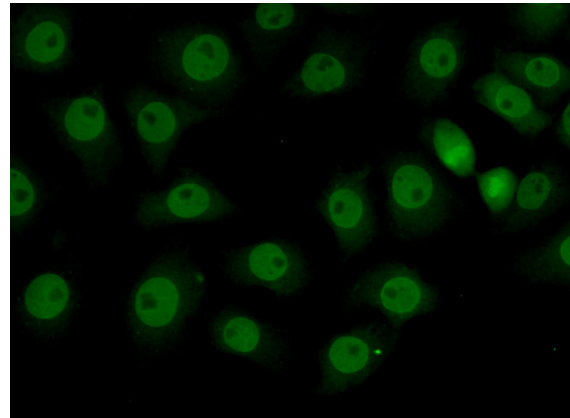
WB: 1:500-1:5000

IF: 1:50-1:500

Validations



SH-SY5Y cells were subjected to SDS PAGE followed by western blot with Catalog No:114840(RPS27L antibody) at dilution of 1:300



Immunofluorescent analysis of (10% Formaldehyde) fixed SH-SY5Y cells using Catalog No:114840(RPS27L Antibody) at dilution of 1:50 and Alexa Fluor 488-conjugated AffiniPure Goat Anti-Rabbit IgG(H+L)