

RPS20 antibody



Catalog Number: 114833

General Information

Product name:

RPS20 antibody

Immunogen:

Applications:

ELISA, WB

Specificity:

Human, Mouse, Rat; other species not tested.

Antibody description:

RPS20 Rabbit Polyclonal antibody. Positive WB detected in MCF7 cells, HEK-293 cells, HepG2 cells, Jurkat cells. Observed molecular weight by Western-blot: 16 kDa

Properties

Preparation:

This antibody was obtained by immunization of RPS20 recombinant protein (Accession Number: BC007507). Purification method: Antigen affinity purified.

Formulation:

PBS with 0.02% sodium azide and 50% glycerol pH 7.3.

Storage:

Store at -20°C. DO NOT ALIQUOT

Clonality:

Polyclonal

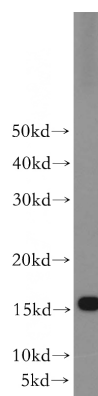
Ig Type: Rabbit IgG

Applications

Recommended Dilution:

WB: 1:500-1:5000

Validations



MCF7 cells were subjected to SDS PAGE followed by western blot with Catalog No:114833(RPS20 antibody) at dilution of 1:500