

RPS16 antibody

Catalog Number: 114831

Product name

RPS16 antibody

IHC: 1:20-1:200

IF: 1:10-1:100

Specificity

human, mouse, rat; other species not tested.

Antibody description

RPS16 Rabbit Polyclonal antibody. Positive IHC detected in human breast cancer. Positive IF detected in MCF-7. Positive WB detected in HeLa cells, Jurkat cells. Observed molecular weight by Western-blot: 16kd

Preparation

This antibody was obtained by immunization of RPS16 recombinant protein (Accession Number: NM_001020). Purification method: Antigen affinity purified.

Formulation

PBS with 0.02% sodium azide and 50% glycerol pH 7.3.

Storage

Store at -20°C. DO NOT ALIQUOT

Clonality

Polyclonal

Ig Type

Rabbit IgG

Applications

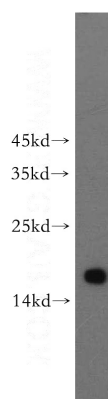
ELISA, WB, IHC, IF

Dilutions

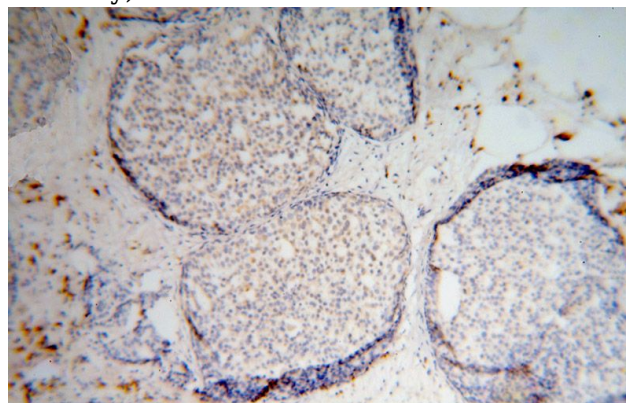
Recommended Dilution:

WB: 1:200-1:2000

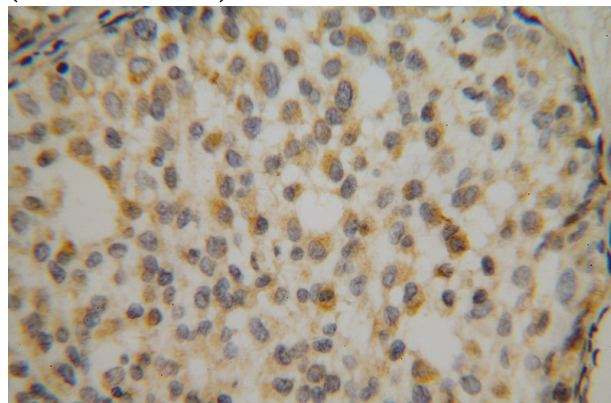
Validations



HeLa cells were subjected to SDS PAGE followed by western blot with Catalog No:114831(RPS16 antibody) at dilution of 1:500



Immunohistochemical of paraffin-embedded human breast cancer using Catalog No:114831(RPS16 antibody) at dilution of 1:50 (under 10x lens)

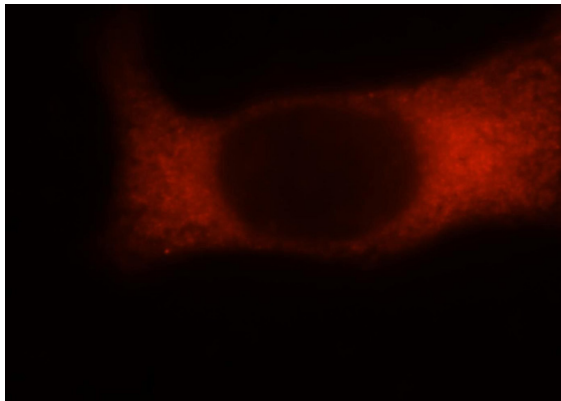


Immunohistochemical of paraffin-embedded

RPS16 antibody

Catalog Number: 114831

human breast cancer using Catalog No:114831(RPS16 antibody) at dilution of 1:50 (under 40x lens)



Immunofluorescent analysis of MCF-7 cells, using RPS16 antibody Catalog No:114831 at 1:25 dilution and Rhodamine-labeled goat anti-rabbit IgG (red).