

# RPL12 antibody

Catalog Number: 114812

---

## Product name

RPL12 antibody

## Specificity

human, mouse, rat; other species not tested.

## Antibody description

RPL12 Rabbit Polyclonal antibody. Positive WB detected in HeLa cells, A549 cells, Jurkat cells. Observed molecular weight by Western-blot: 21kd

## Preparation

This antibody was obtained by immunization of RPL12 recombinant protein (Accession Number: NM\_000976). Purification method: Antigen affinity purified.

## Formulation

PBS with 0.02% sodium azide and 50% glycerol pH 7.3.

## Storage

Store at -20°C. DO NOT ALIQUOT

## Clonality

Polyclonal

## Ig Type

Rabbit IgG

## Applications

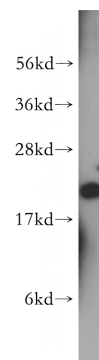
ELISA, WB

## Dilutions

Recommended Dilution:

WB: 1:500-1:5000

## Validations



HeLa cells were subjected to SDS PAGE followed by western blot with Catalog No:114812(RPL12 antibody) at dilution of 1:400