

RPH3A antibody

Catalog Number: 114806

Product name

RPH3A antibody

Specificity

Human, Mouse, Rat; other species not tested.

Antibody description

RPH3A Rabbit Polyclonal antibody. Positive IF detected in COLO 320 cells. Positive WB detected in COLO 320 cells, human brain tissue. Observed molecular weight by Western-blot: 76kd

Preparation

This antibody was obtained by immunization of RPH3A recombinant protein (Accession Number: NM_014954). Purification method: Antigen affinity purified.

Formulation

PBS with 0.1% sodium azide and 50% glycerol pH 7.3.

Storage

Store at -20°C. DO NOT ALIQUOT

Clonality

Polyclonal

Ig Type

Rabbit IgG

Applications

ELISA, WB, IF

Dilutions

Recommended Dilution:

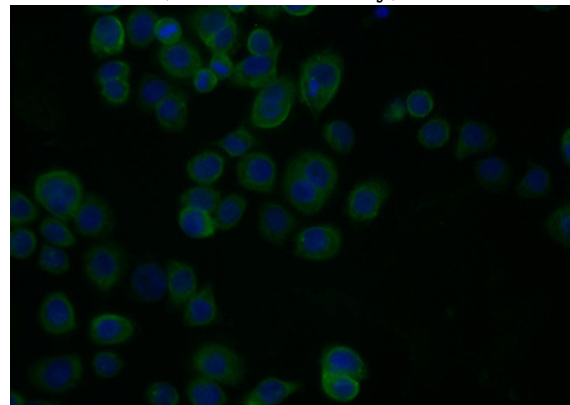
WB: 1:200-1:2000

IF: 1:10-1:100

Validations



COLO 320 cells were subjected to SDS PAGE followed by western blot with Catalog No:114806(RPH3A antibody) at dilution of 1:800



Immunofluorescent analysis of COLO 320 cells using Catalog No:114806(RPH3A Antibody) at dilution of 1:25 and Alexa Fluor 488-conjugated AffiniPure Goat Anti-Rabbit IgG(H+L)