

ROCK2 antibody



Catalog Number: 114779

Product name

ROCK2 antibody

Specificity

Human, Mouse, Rat; other species not tested.

Antibody description

ROCK2 Rabbit Polyclonal antibody. Positive IHC detected in human liver tissue. Positive IF detected in HepG2 cells, HeLa cells. Positive IP detected in HeLa cells. Positive WB detected in HT-1080 cells, HeLa cells, L02 cells, MCF7 cells, mouse brain tissue, mouse liver tissue, mouse lung tissue. Observed molecular weight by Western-blot: 161kd

Preparation

This antibody was obtained by immunization of ROCK2 recombinant protein (Accession Number: BC111801). Purification method: Antigen affinity purified.

Formulation

PBS with 0.02% sodium azide and 50% glycerol pH 7.3.

Storage

Store at -20°C. DO NOT ALIQUOT

Clonality

Polyclonal

Ig Type

Rabbit IgG

Applications

ELISA, WB, IHC, IF, IP

Dilutions

Recommended Dilution:

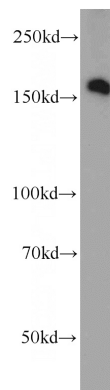
WB: 1:1000-1:10000

IP: 1:200-1:2000

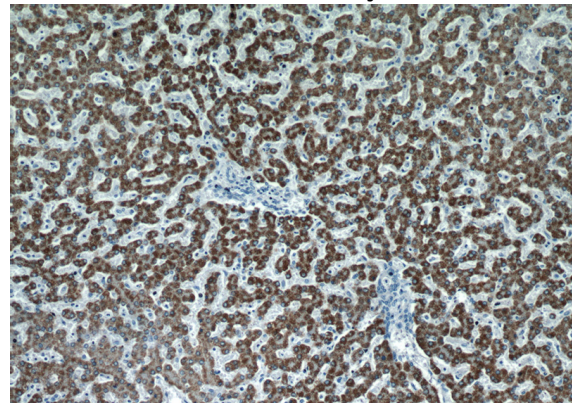
IHC: 1:20-1:200

IF: 1:10-1:100

Validations



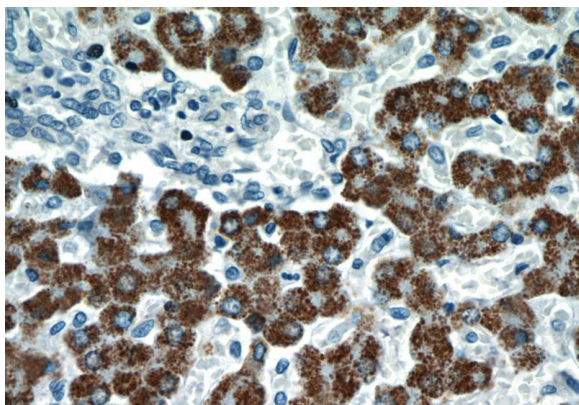
HT-1080 cells were subjected to SDS PAGE followed by western blot with Catalog No:114779(RockK2 antibody) at dilution of 1:1000



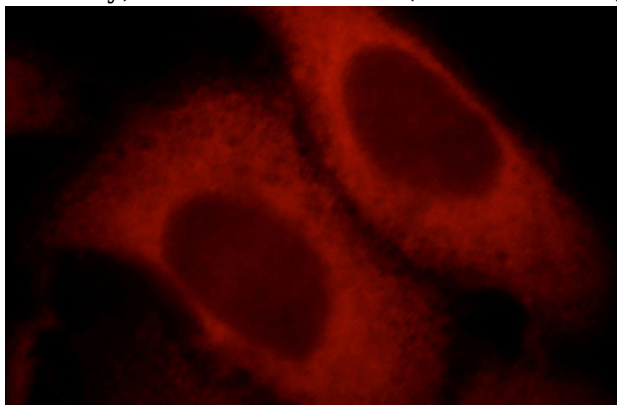
Immunohistochemical of paraffin-embedded human liver using Catalog No:114779(RockK2 antibody) at dilution of 1:100 (under 10x lens)

ROCK2 antibody

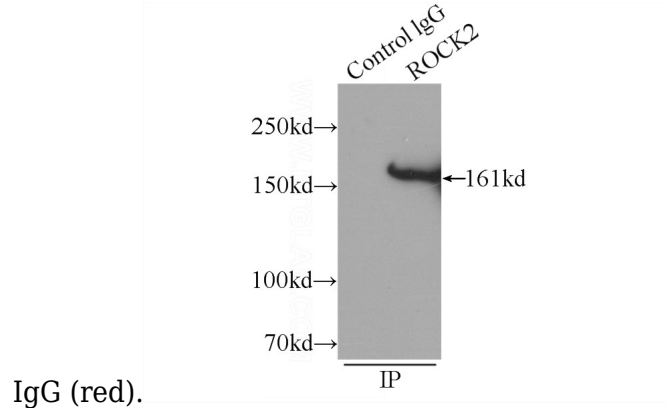
Catalog Number: 114779



Immunohistochemical of paraffin-embedded human liver using Catalog No:114779(Rock2 antibody) at dilution of 1:100 (under 40x lens)



Immunofluorescent analysis of HepG2 cells, using Rock2 antibody Catalog No:114779 at 1:25 dilution and Rhodamine-labeled goat anti-rabbit



IgG (red).

IP Result of anti-Rock2 (IP:Catalog No:114779, 5ug; Detection:Catalog No:114779 1:700) with HeLa cells lysate 1320ug.