

# RIN1 antibody

Catalog Number: 114708

## Product name

RIN1 antibody

IP: 1:200-1:2000

IF: 1:50-1:500

## Specificity

Human, Mouse, Rat; other species not tested.

## Antibody description

RIN1 Rabbit Polyclonal antibody. Positive IF detected in HeLa cells. Positive IP detected in HeLa cells. Positive WB detected in HeLa cells. Observed molecular weight by Western-blot: 90 kDa

## Preparation

This antibody was obtained by immunization of RIN1 recombinant protein (Accession Number: NM\_004292). Purification method: Antigen affinity purified.

## Formulation

PBS with 0.02% sodium azide and 50% glycerol pH 7.3.

## Storage

Store at -20°C. DO NOT ALIQUOT

## Clonality

Polyclonal

## Ig Type

Rabbit IgG

## Applications

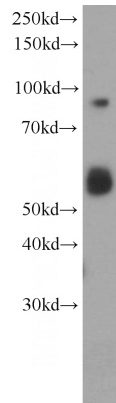
ELISA, WB, IF, IP

## Dilutions

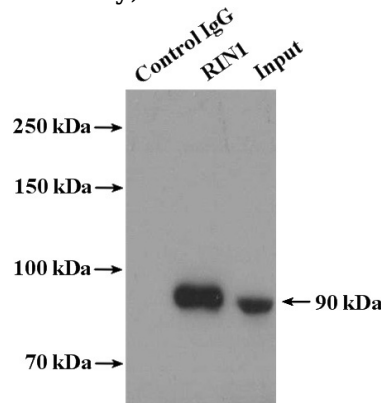
Recommended Dilution:

WB: 1:500-1:5000

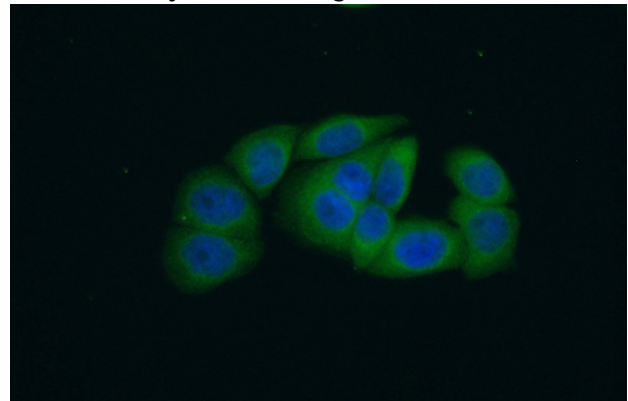
## Validations



HeLa cells were subjected to SDS PAGE followed by western blot with Catalog No:114708(RIN1 antibody) at dilution of 1:1000



IP Result of anti-RIN1 (IP:Catalog No:114708, 4ug; Detection:Catalog No:114708 1:500) with HeLa cells lysate 3400ug.



Immunofluorescent analysis of (10% Formaldehyde) fixed HeLa cells using Catalog

# RIN1 antibody



Catalog Number: 114708

---

No:114708(RIN1 Antibody) at dilution of 1:50 and

Alexa Fluor 488-conjugated AffiniPure Goat Anti-Rabbit IgG(H+L)