

# RIMBP2 antibody



Catalog Number: 114704

## Product name

RIMBP2 antibody

## Specificity

Human, Mouse, Rat; other species not tested.

## Antibody description

RIMBP2 Rabbit Polyclonal antibody. Positive IHC detected in human kidney tissue. Positive WB detected in mouse kidney tissue, mouse brain tissue. Observed molecular weight by Western-blot: 40-50 kDa, 120-130 kDa

## Preparation

This antibody was obtained by immunization of RIMBP2 recombinant protein (Accession Number: NM\_001351233). Purification method: Antigen affinity purified.

## Formulation

PBS with 0.1% sodium azide and 50% glycerol pH 7.3.

## Storage

Store at -20°C. DO NOT ALIQUOT

## Clonality

Polyclonal

## Ig Type

Rabbit IgG

## Applications

ELISA, WB, IHC

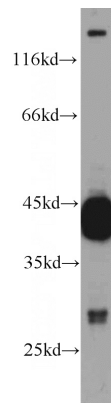
## Dilutions

Recommended Dilution:

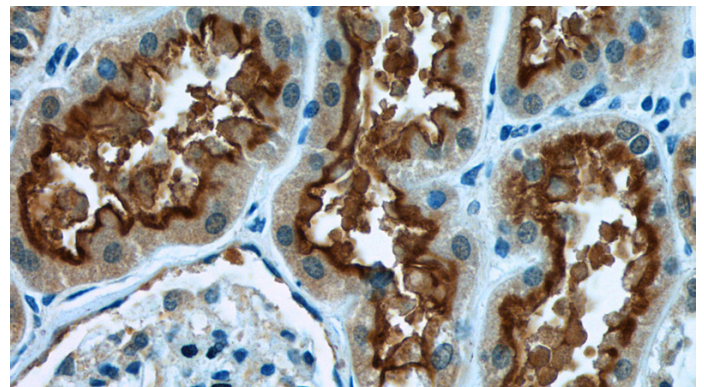
WB: 1:500-1:5000

IHC: 1:20-1:200

## Validations



mouse kidney tissue were subjected to SDS PAGE followed by western blot with Catalog No:114704(RIMBP2 antibody) at dilution of 1:1000



Immunohistochemistry of paraffin-embedded human kidney tissue slide using Catalog No:114704(RIMBP2 Antibody) at dilution of 1:50 (under 40x lens)