

RIM2-Specific antibody



Catalog Number: 114703

Product name

RIM2-Specific antibody

Specificity

Human, Mouse, Rat; other species not tested.

Antibody description

RIM2-Specific Rabbit Polyclonal antibody. Positive WB detected in L02 cells. Observed molecular weight by Western-blot: 133 kDa

Preparation

This antibody was obtained by immunization of Peptide (Accession Number: NM_001100117). Purification method: Antigen affinity purified.

Formulation

PBS with 0.02% sodium azide and 50% glycerol pH 7.3.

Storage

Store at -20°C. DO NOT ALIQUOT

Clonality

Polyclonal

Ig Type

Rabbit IgG

Applications

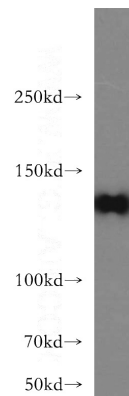
ELISA, WB

Dilutions

Recommended Dilution:

WB: 1:500-1:5000

Validations



L02 cells were subjected to SDS PAGE followed by western blot with Catalog No:114703(RIMS2-Specific antibody) at dilution of 1:400