

# RDM1 antibody

Catalog Number: 114671

## Product name

RDM1 antibody

## Specificity

Human; other species not tested.

## Antibody description

RDM1 Rabbit Polyclonal antibody. Positive IHC detected in human testis tissue, human brain tissue. Positive WB detected in PC-3 cells, human placenta tissue, MCF7 cells. Observed molecular weight by Western-blot: 32 kDa

## Preparation

This antibody was obtained by immunization of RDM1 recombinant protein (Accession Number: BC038301). Purification method: Antigen affinity purified.

## Formulation

PBS with 0.02% sodium azide and 50% glycerol pH 7.3.

## Storage

Store at -20°C. DO NOT ALIQUOT

## Clonality

Polyclonal

## Ig Type

Rabbit IgG

## Applications

ELISA, WB, IHC

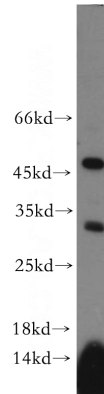
## Dilutions

Recommended Dilution:

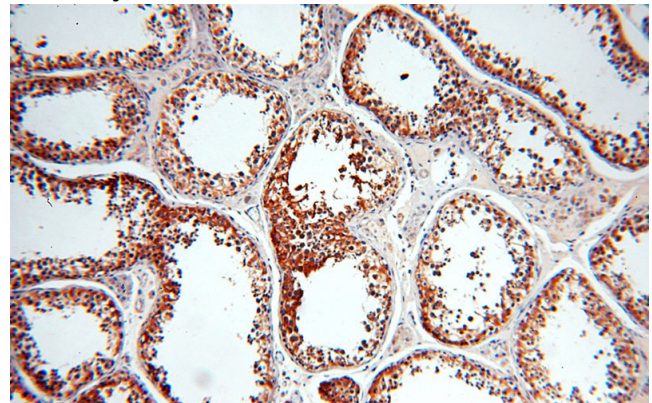
WB: 1:200-1:2000

IHC: 1:20-1:200

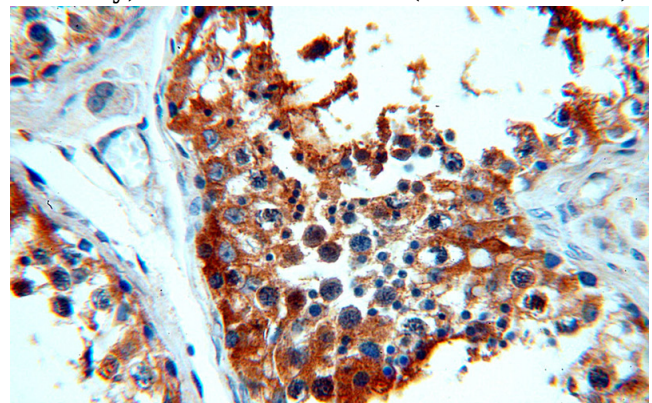
## Validations



PC-3 cells were subjected to SDS PAGE followed by western blot with Catalog No:114671(RDM1 antibody) at dilution of 1:500



Immunohistochemical of paraffin-embedded human testis using Catalog No:114671(RDM1 antibody) at dilution of 1:100 (under 10x lens)



Immunohistochemical of paraffin-embedded human testis using Catalog No:114671(RDM1 antibody) at dilution of 1:100 (under 40x lens)