

RBM6 antibody

Catalog Number: 114618

Product name

RBM6 antibody

IP: 1:200-1:2000

IHC: 1:20-1:200

Specificity

Human, Mouse, Rat; other species not tested.

Antibody description

RBM6 Rabbit Polyclonal antibody. Positive WB detected in HeLa cells, mouse spleen tissue. Positive IP detected in HeLa cells. Positive IHC detected in human pancreas cancer tissue. Observed molecular weight by Western-blot: 129 kDa

Preparation

This antibody was obtained by immunization of RBM6 recombinant protein (Accession Number: NM_001349193). Purification method: Antigen affinity purified.

Formulation

PBS with 0.02% sodium azide and 50% glycerol pH 7.3.

Storage

Store at -20°C. DO NOT ALIQUOT

Clonality

Polyclonal

Ig Type

Rabbit IgG

Applications

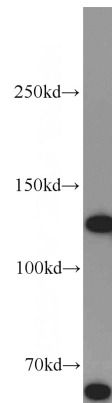
ELISA, WB, IHC, IP

Dilutions

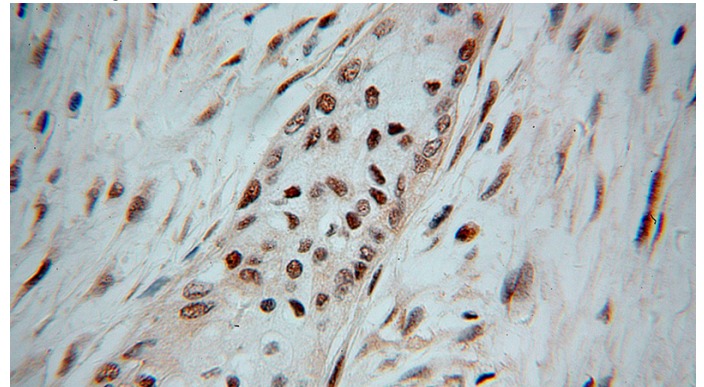
Recommended Dilution:

WB: 1:200-1:2000

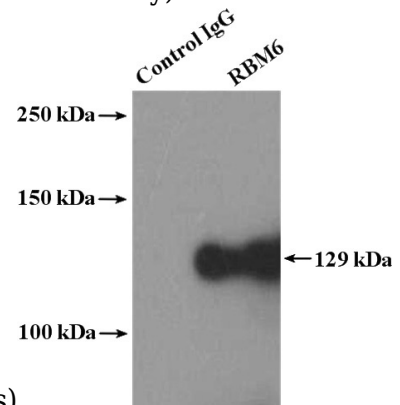
Validations



HeLa cells were subjected to SDS PAGE followed by western blot with Catalog No:114618(RBM6 antibody) at dilution of 1:300



Immunohistochemical of paraffin-embedded human pancreas cancer using Catalog No:114618(RBM6 antibody) at dilution of 1:100



(under 40x lens)

IP Result of anti-RBM6 (IP:Catalog No:114618, 4ug; Detection:Catalog No:114618 1:500) with

RBM6 antibody



Catalog Number: 114618

HeLa cells lysate 2000ug.