

# RCC1 antibody

Catalog Number: 114576

## Product name

RCC1 antibody

## Specificity

Human, Mouse, Rat; other species not tested.

## Antibody description

RCC1 Rabbit Polyclonal antibody. Positive IHC detected in human ovary tumor tissue. Positive WB detected in MCF7 cells, Jurkat cells, mouse testis tissue, Raji cells. Observed molecular weight by Western-blot: 68kd

## Preparation

This antibody was obtained by immunization of RCC1 recombinant protein (Accession Number: NM\_001381866). Purification method: Antigen affinity purified.

## Formulation

PBS with 0.1% sodium azide and 50% glycerol pH 7.3.

## Storage

Store at -20°C. DO NOT ALIQUOT

## Clonality

Polyclonal

## Ig Type

Rabbit IgG

## Applications

ELISA, WB, IHC

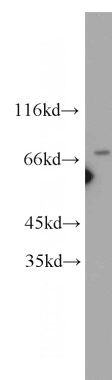
## Dilutions

Recommended Dilution:

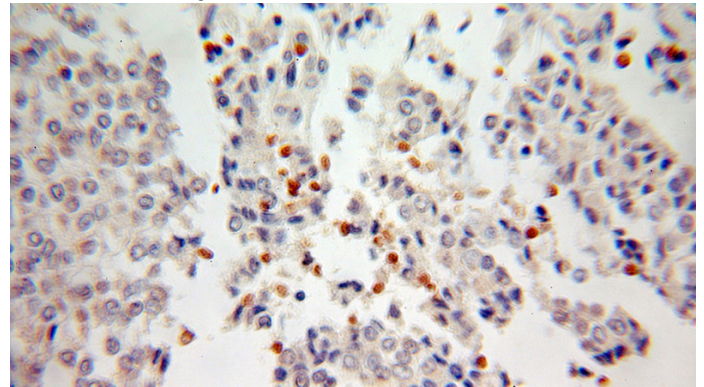
WB: 1:200-1:1000

IHC: 1:20-1:200

## Validations



MCF7 cells were subjected to SDS PAGE followed by western blot with Catalog No:114576(SNHG3-RCC1 antibody) at dilution of 1:300



Immunohistochemical of paraffin-embedded human ovary tumor using Catalog No:114576(SNHG3-RCC1 antibody) at dilution of 1:100 (under 10x lens)