

# RAPH1 antibody

Catalog Number: 114553

## Product name

RAPH1 antibody

IHC: 1:20-1:200

IF: 1:10-1:100

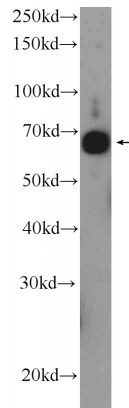
## Specificity

Human; other species not tested.

## Validations

## Antibody description

RAPH1 Rabbit Polyclonal antibody. Positive IF detected in HepG2 cells. Positive IHC detected in human liver tissue, human ovary tissue. Positive WB detected in SKOV-3 cells, SH-SY5Y cells. Observed molecular weight by Western-blot: 67 kDa



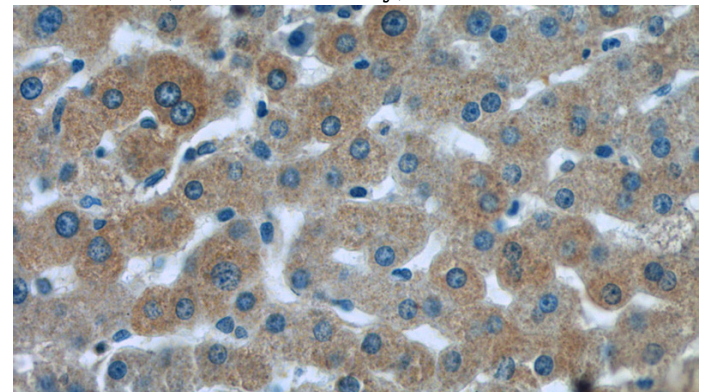
## Preparation

This antibody was obtained by immunization of RAPH1 recombinant protein (Accession Number: XM\_047445548). Purification method: Antigen affinity purified.

SKOV-3 cells were subjected to SDS PAGE followed by western blot with Catalog No:114553(RAPH1 Antibody) at dilution of 1:600

## Formulation

PBS with 0.1% sodium azide and 50% glycerol pH 7.3.



## Storage

Store at -20°C. DO NOT ALIQUOT

## Clonality

Polyclonal

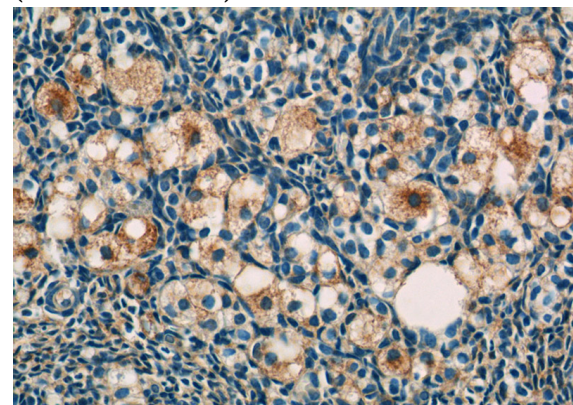
Immunohistochemistry of paraffin-embedded human liver tissue slide using Catalog No:114553(RAPH1 Antibody) at dilution of 1:50 (under 40x lens)

## Ig Type

Rabbit IgG

## Applications

ELISA, WB, IHC, IF



## Dilutions

Recommended Dilution:

WB: 1:200-1:2000

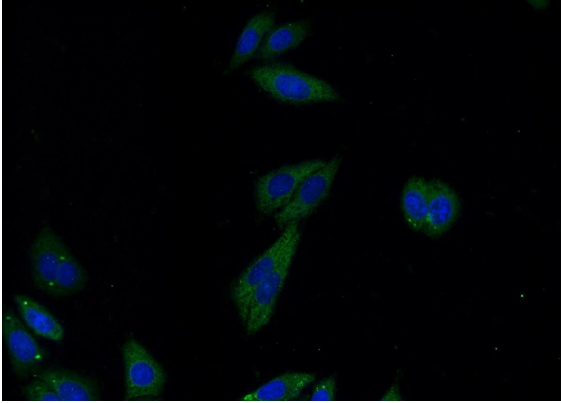
Immunohistochemistry of paraffin-embedded

# RAPH1 antibody

Catalog Number: 114553

---

human ovary tissue slide using Catalog No:114553(RAPH1 Antibody) at dilution of 1:50 (under 40x lens)



Immunofluorescent analysis of HepG2 cells using Catalog No:114553(RAPH1 Antibody) at dilution of 1:25 and Alexa Fluor 488-conjugated AffiniPure Goat Anti-Rabbit IgG(H+L)