

RAPGEFL1 antibody



Catalog Number: 114552

Product name

RAPGEFL1 antibody

Specificity

human, mouse, rat; other species not tested.

Antibody description

RAPGEFL1 Rabbit Polyclonal antibody. Positive IF detected in HepG2. Positive WB detected in human brain tissue, mouse kidney tissue. Observed molecular weight by Western-blot: 73kd,59kd

Preparation

This antibody was obtained by immunization of RAPGEFL1 recombinant protein (Accession Number: XM_047436205). Purification method: Antigen affinity purified.

Formulation

PBS with 0.02% sodium azide and 50% glycerol pH 7.3.

Storage

Store at -20°C. DO NOT ALIQUOT

Clonality

Polyclonal

Ig Type

Rabbit IgG

Applications

ELISA, WB, IF

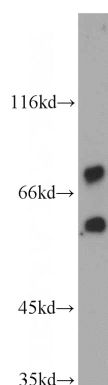
Dilutions

Recommended Dilution:

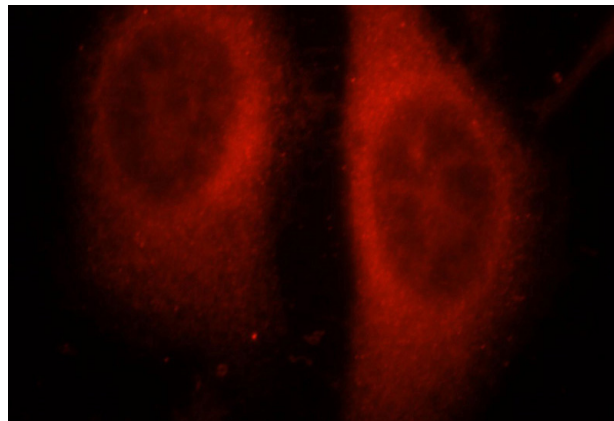
WB: 1:500-1:5000

IF: 1:10-1:100

Validations



human brain tissue were subjected to SDS PAGE followed by western blot with Catalog No:114552(RAPGEFL1 antibody) at dilution of 1:500



Immunofluorescent analysis of HepG2 cells, using RAPGEFL1 antibody Catalog No:114552 at 1:25 dilution and Rhodamine-labeled goat anti-rabbit IgG (red).