

# RAE1 antibody



Catalog Number: 114522

## Product name

RAE1 antibody

## Specificity

Human; other species not tested.

## Antibody description

RAE1 Rabbit Polyclonal antibody. Positive WB detected in HepG2 cells, HEK-293 cells. Positive IF detected in HepG2 cells. Observed molecular weight by Western-blot: 41-43 kDa

## Preparation

This antibody was obtained by immunization of RAE1 recombinant protein (Accession Number: NM\_003610). Purification method: Antigen affinity purified.

## Formulation

PBS with 0.1% sodium azide and 50% glycerol pH 7.3.

## Storage

Store at -20°C. DO NOT ALIQUOT

## Clonality

Polyclonal

## Ig Type

Rabbit IgG

## Applications

ELISA, WB, IF

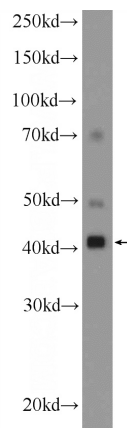
## Dilutions

Recommended Dilution:

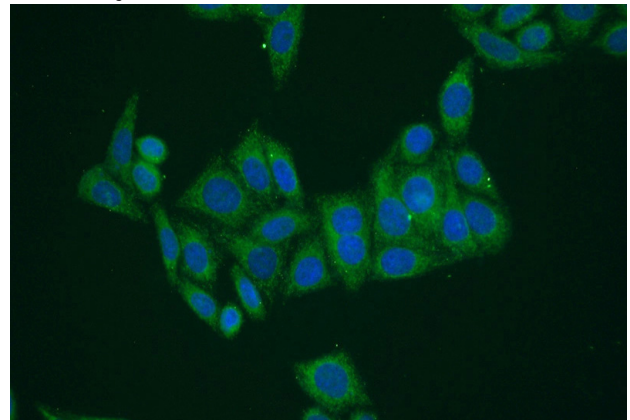
WB: 1:200-1:1000

IF: 1:50-1:500

## Validations



HepG2 cells were subjected to SDS PAGE followed by western blot with Catalog No:114522(RAE1 Antibody) at dilution of 1:300



Immunofluorescent analysis of (-20oc Ethanol) fixed HepG2 cells using Catalog No:114522(RAE1 Antibody) at dilution of 1:50 and Alexa Fluor 488-conjugated AffiniPure Goat Anti-Rabbit IgG(H+L)