

# RABL3 antibody

Catalog Number: 114502

## Product name

RABL3 antibody

## Specificity

Human, Mouse, Rat; other species not tested.

## Antibody description

RABL3 Rabbit Polyclonal antibody. Positive IHC detected in human breast cancer tissue, human cervical cancer tissue, human kidney tissue, human liver cancer tissue. Positive IP detected in mouse lung tissue. Positive WB detected in human lung tissue, human brain tissue, mouse brain tissue. Observed molecular weight by Western-blot: 26 kDa

## Preparation

This antibody was obtained by immunization of RABL3 recombinant protein (Accession Number: NM\_173825). Purification method: Antigen affinity purified.

## Formulation

PBS with 0.1% sodium azide and 50% glycerol pH 7.3.

## Storage

Store at -20°C. DO NOT ALIQUOT

## Clonality

Polyclonal

## Ig Type

Rabbit IgG

## Applications

ELISA, WB, IHC, IP

## Dilutions

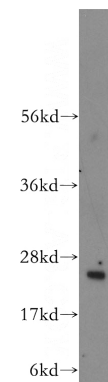
Recommended Dilution:

WB: 1:200-1:2000

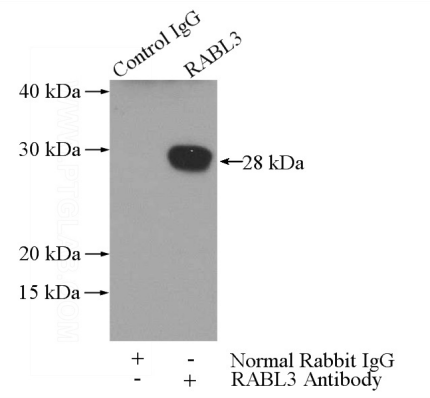
IP: 1:200-1:1000

IHC: 1:20-1:200

## Validations



human lung tissue were subjected to SDS PAGE followed by western blot with Catalog No:114502(RABL3 antibody) at dilution of 1:300

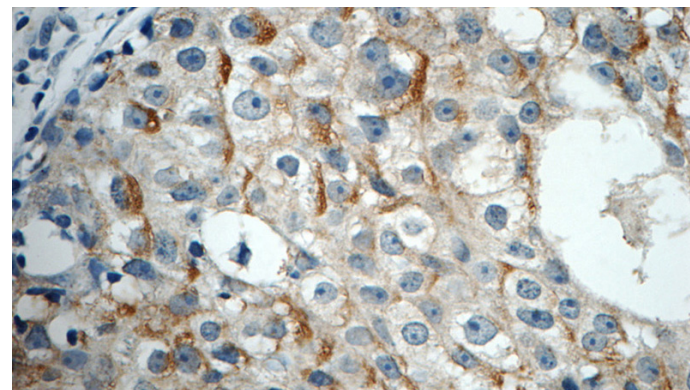
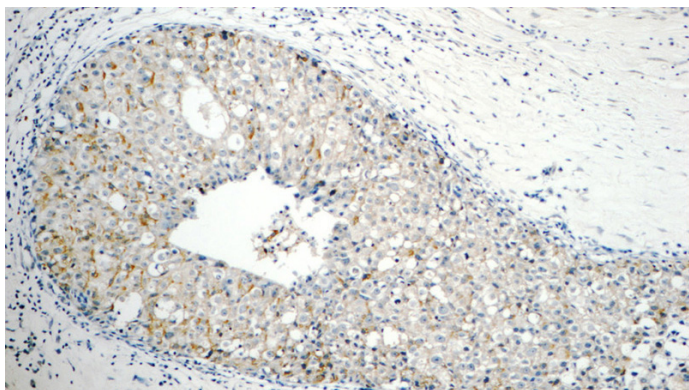


IP Result of anti-RABL3 (IP:Catalog No:114502, 3ug; Detection:Catalog No:114502 1:300) with mouse lung tissue lysate 4000ug.

# RABL3 antibody

Catalog Number: 114502

---



Immunohistochemistry of paraffin-embedded human breast cancer tissue slide using Catalog No:114502(RABL3 Antibody) at dilution of 1:50 (under 10x lens)

Immunohistochemistry of paraffin-embedded human breast cancer tissue slide using Catalog No:114502(RABL3 Antibody) at dilution of 1:50 (under 40x lens)