

RASEF antibody

Catalog Number: 114473

Product name

RASEF antibody

Specificity

Human, Mouse; other species not tested.

Antibody description

RASEF Rabbit Polyclonal antibody. Positive IHC detected in human pancreas cancer tissue. Positive WB detected in mouse testis tissue. Observed molecular weight by Western-blot: 83 kDa

Preparation

This antibody was obtained by immunization of RASEF recombinant protein (Accession Number: NM_152573). Purification method: Antigen affinity purified.

Formulation

PBS with 0.1% sodium azide and 50% glycerol pH 7.3.

Storage

Store at -20°C. DO NOT ALIQUOT

Clonality

Polyclonal

Ig Type

Rabbit IgG

Applications

ELISA, WB, IHC

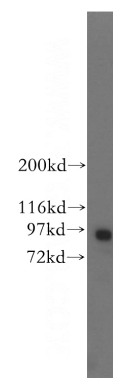
Dilutions

Recommended Dilution:

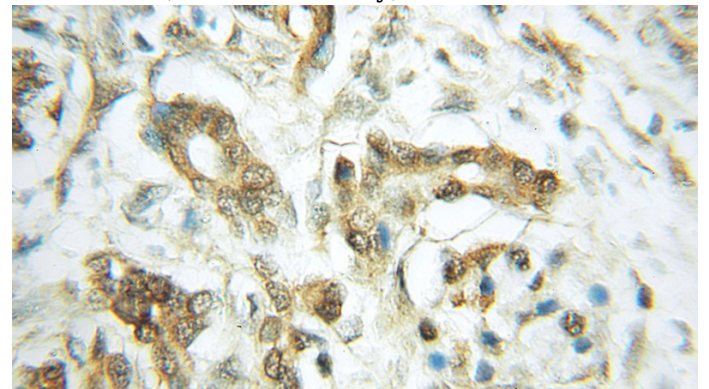
WB: 1:500-1:5000

IHC: 1:20-1:200

Validations



mouse testis tissue were subjected to SDS PAGE followed by western blot with Catalog No:114473(RASEF antibody) at dilution of 1:300



Immunohistochemical of paraffin-embedded human pancreas cancer using Catalog No:114473(RASEF antibody) at dilution of 1:50 (under 10x lens)