

# RAB22A antibody

Catalog Number: 114420

## Product name

RAB22A antibody

IP: 1:200-1:1000

IHC: 1:20-1:200

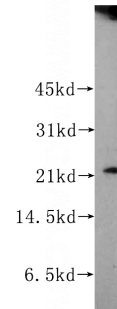
## Specificity

Human, Mouse; other species not tested.

## Validations

## Antibody description

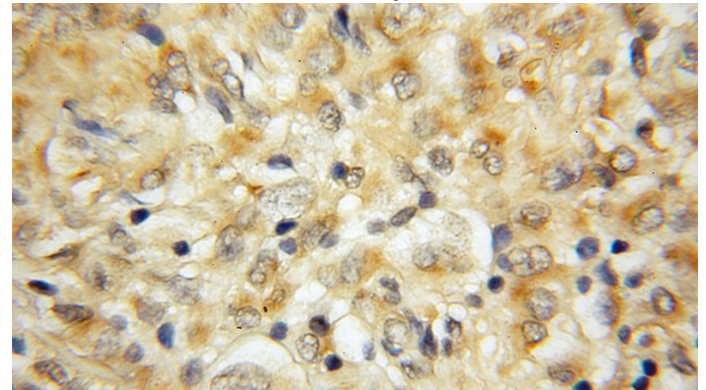
RAB22A Rabbit Polyclonal antibody. Positive IHC detected in human gliomas tissue. Positive IP detected in COLO 320 cells. Positive WB detected in BxPC-3 cells, COLO 320 cells, Jurkat cells. Observed molecular weight by Western-blot: 22 kDa



## Preparation

This antibody was obtained by immunization of RAB22A recombinant protein (Accession Number: NM\_020673). Purification method: Antigen affinity purified.

BxPC-3 cells were subjected to SDS PAGE followed by western blot with Catalog No:114420(RAB22A antibody) at dilution of 1:400



## Formulation

PBS with 0.1% sodium azide and 50% glycerol pH 7.3.

## Storage

Store at -20°C. DO NOT ALIQUOT

Immunohistochemical of paraffin-embedded human gliomas using Catalog No:114420(RAB22A antibody) at dilution of 1:50 (under 10x lens)

## Clonality

Polyclonal

## Ig Type

Rabbit IgG

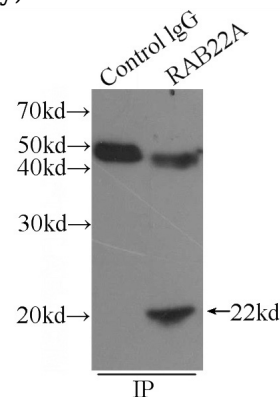
## Applications

ELISA, WB, IHC, IP

## Dilutions

Recommended Dilution:

WB: 1:200-1:2000



IP Result of anti-RAB22A (IP:Catalog No:114420, 3ug; Detection:Catalog No:114420 1:300) with

# RAB22A antibody



Catalog Number: 114420

---

COLO 320 cells lysate 1720ug.