

PSMB2 antibody

Catalog Number: 114382

Product name

PSMB2 antibody

IHC: 1:20-1:200

IF: 1:20-1:200

Specificity

Human, Mouse, Rat; other species not tested.

Antibody description

PSMB2 Rabbit Polyclonal antibody. Positive WB detected in Jurkat cells, HEK-293 cells, HeLa cells. Positive IF detected in HepG2 cells. Positive IHC detected in human ovary tumor tissue. Observed molecular weight by Western-blot: 23kd

Preparation

This antibody was obtained by immunization of PSMB2 recombinant protein (Accession Number: BC000268). Purification method: Antigen affinity purified.

Formulation

PBS with 0.02% sodium azide and 50% glycerol pH 7.3.

Storage

Store at -20°C. DO NOT ALIQUOT

Clonality

Polyclonal

Ig Type

Rabbit IgG

Applications

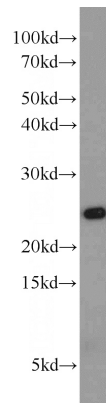
ELISA, WB, IHC, IF

Dilutions

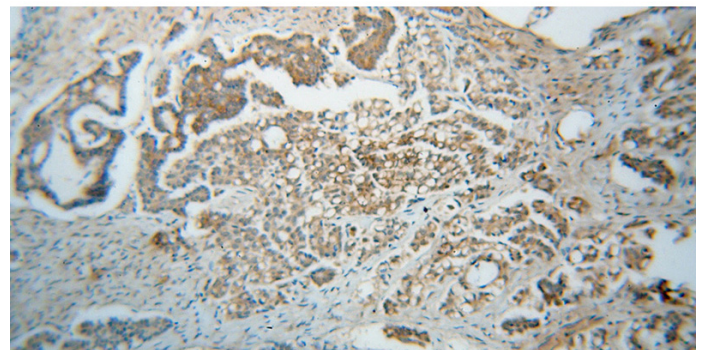
Recommended Dilution:

WB: 1:200-1:2000

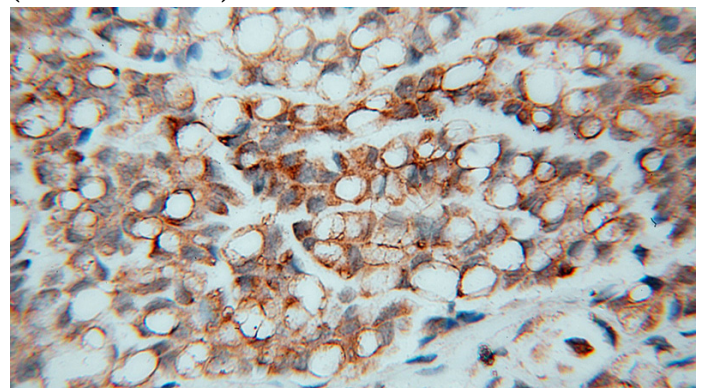
Validations



Jurkat cells were subjected to SDS PAGE followed by western blot with Catalog No:114382(PSMB2 antibody) at dilution of 1:800



Immunohistochemical of paraffin-embedded human ovary tumor using Catalog No:114382(PSMB2 antibody) at dilution of 1:50 (under 10x lens)

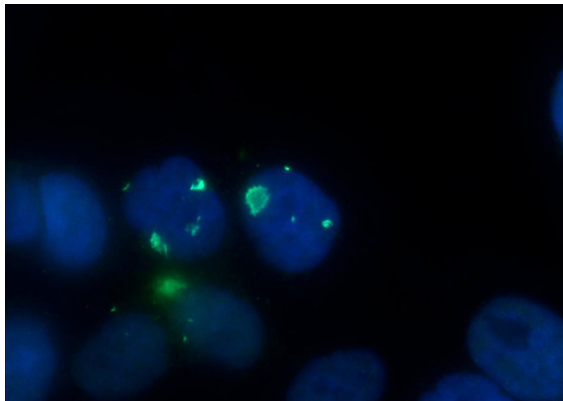


Immunohistochemical of paraffin-embedded

PSMB2 antibody

Catalog Number: 114382

human ovary tumor using Catalog
No:114382(PSMB2 antibody) at dilution of 1:50
(under 40x lens)



Immunofluorescent analysis of HepG2 cells using
Catalog No:114382(PSMB2 Antibody) at dilution
of 1:50 and Alexa Fluor 488-conjugated AffiniPure
Goat Anti-Rabbit IgG(H+L)