

PSMA/GCPII antibody

Catalog Number: 114371

Product name

PSMA/GCPII antibody

WB: 1:200-1:2000

IHC: 1:20-1:200

Specificity

Human, Mouse, Rat; other species not tested.

Antibody description

PSMA/GCPII Rabbit Polyclonal antibody. Positive WB detected in human liver tissue, mouse kidney tissue, PC-3 cells, rat kidney tissue. Positive IHC detected in human prostate cancer tissue, human colon cancer tissue, human gliomas tissue. Observed molecular weight by Western-blot: 100 kDa, 120 kDa

Preparation

This antibody was obtained by immunization of PSMA/GCPII recombinant protein (Accession Number: NM_001014986). Purification method: Antigen affinity purified.

Formulation

PBS with 0.02% sodium azide and 50% glycerol pH 7.3.

Storage

Store at -20°C. DO NOT ALIQUOT

Clonality

Polyclonal

Ig Type

Rabbit IgG

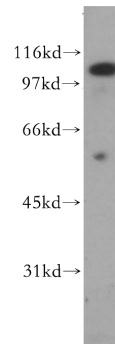
Applications

ELISA, WB, IHC

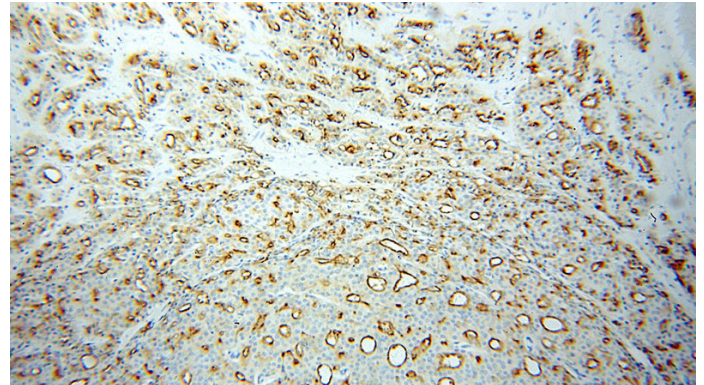
Dilutions

Recommended Dilution:

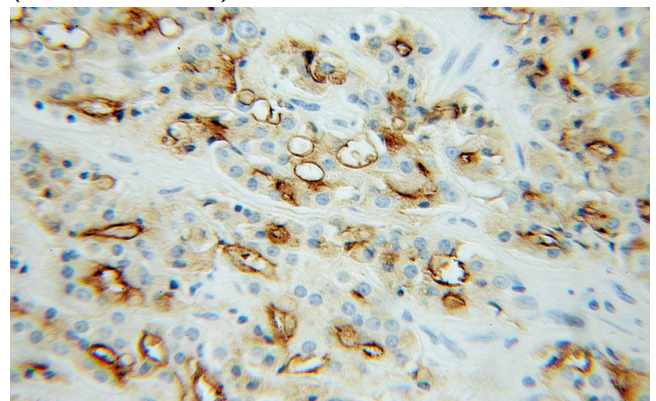
Validations



human liver tissue were subjected to SDS PAGE followed by western blot with Catalog No:114371(FOLH1 antibody) at dilution of 1:500



Immunohistochemical of paraffin-embedded human prostate cancer using Catalog No:114371(FOLH1 antibody) at dilution of 1:100 (under 10x lens)



Immunohistochemical of paraffin-embedded

PSMA/GCPII antibody



Catalog Number: 114371

human prostate cancer using Catalog

No:114371(FOLH1 antibody) at dilution of 1:100
(under 40x lens)