

PYCR1 antibody

Catalog Number: 114352

Product name

PYCR1 antibody

Specificity

Human, Mouse, Rat, Zebrafish; other species not tested.

Antibody description

PYCR1 Rabbit Polyclonal antibody. Positive IP detected in mouse brain tissue. Positive WB detected in HT-1080 cells, human brain tissue, mouse brain tissue, mouse embryo tissue, NIH/3T3 cells. Positive IHC detected in human prostate cancer tissue. Positive IF detected in MCF-7 cells. Observed molecular weight by Western-blot: 33 kDa, 35 kDa

Preparation

This antibody was obtained by immunization of PYCR1 recombinant protein (Accession Number: BC022244). Purification method: Antigen affinity purified.

Formulation

PBS with 0.02% sodium azide and 50% glycerol pH 7.3.

Storage

Store at -20°C. DO NOT ALIQUOT

Clonality

Polyclonal

Ig Type

Rabbit IgG

Applications

ELISA, IHC, IF, IP, WB

Dilutions

Recommended Dilution:

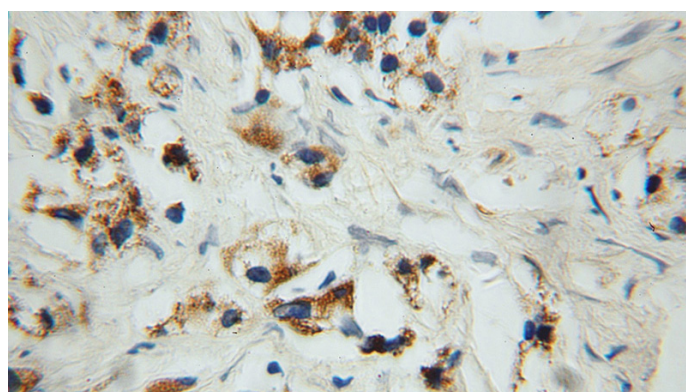
WB: 1:500-1:5000

IP: 1:200-1:2000

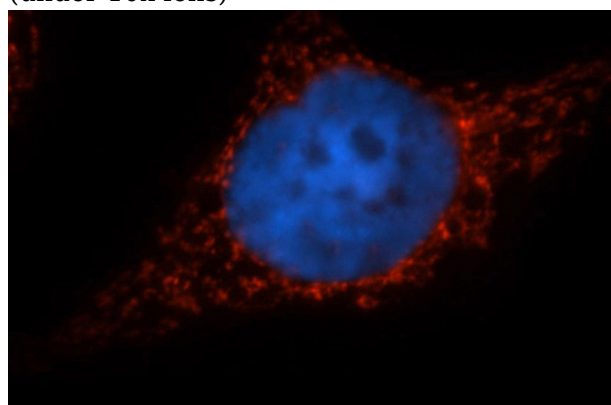
IHC: 1:20-1:200

IF: 1:20-1:200

Validations



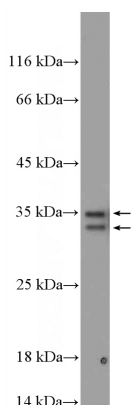
Immunohistochemical of paraffin-embedded human prostate cancer using Catalog No:114352(PYCR1 antibody) at dilution of 1:100 (under 10x lens)



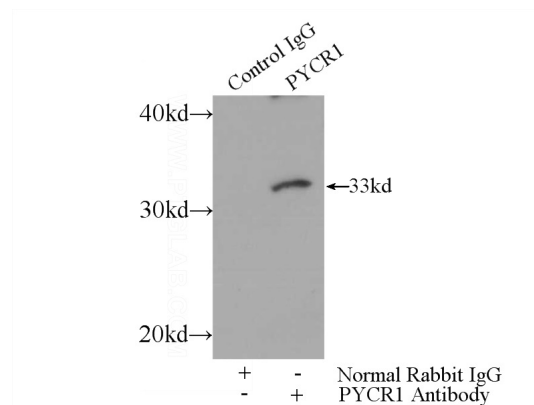
Immunofluorescent analysis of MCF-7 cells, using PYCR1 antibody Catalog No:114352 at 1:50 dilution and Rhodamine-labeled goat anti-rabbit IgG (red). Blue pseudocolor = DAPI (fluorescent

PYCR1 antibody

Catalog Number: 114352



DNA dye).



HT-1080 cells were subjected to SDS PAGE followed by western blot with Catalog No:114352(PYCR1 Antibody) at dilution of 1:1000

IP Result of anti-PYCR1 (IP:Catalog No:114352, 3ug; Detection:Catalog No:114352 1:700) with mouse brain tissue lysate 4000ug.