

PTTG1IP antibody



Catalog Number: 114335

Product name

PTTG1IP antibody

IHC: 1:20-1:200

IF: 1:10-1:100

Specificity

Human; other species not tested.

Antibody description

PTTG1IP Rabbit Polyclonal antibody. Positive WB detected in HeLa cells, A375 cells, HEK-293 cells, PC-3 cells. Positive IHC detected in human testis tissue, human colon tissue, human liver tissue. Positive IF detected in A375 cells, PC-3 cells. Observed molecular weight by Western-blot: 26kd

Preparation

This antibody was obtained by immunization of PTTG1IP recombinant protein (Accession Number: NM_004339). Purification method: Antigen affinity purified.

Formulation

PBS with 0.02% sodium azide and 50% glycerol pH 7.3.

Storage

Store at -20°C. DO NOT ALIQUOT

Clonality

Polyclonal

Ig Type

Rabbit IgG

Applications

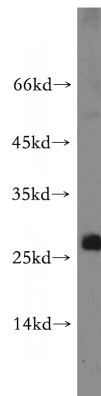
ELISA, WB, IHC, IF

Dilutions

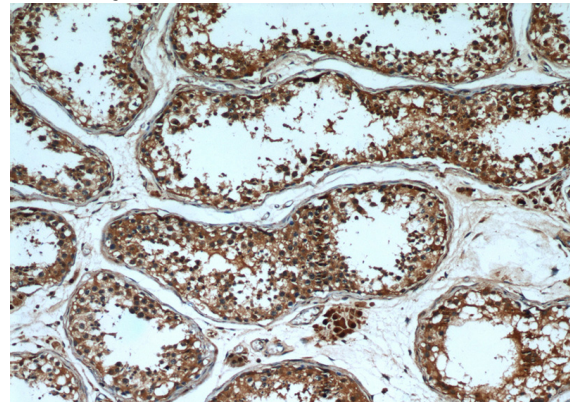
Recommended Dilution:

WB: 1:200-1:2000

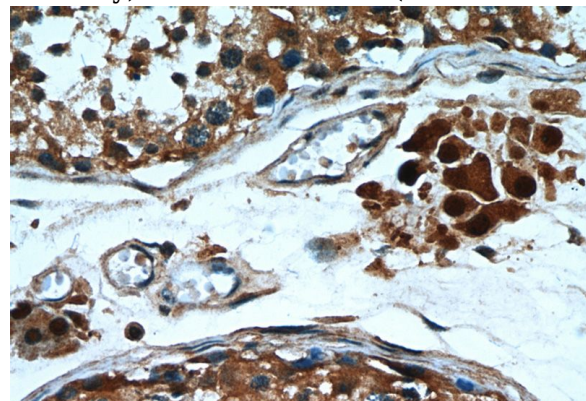
Validations



HeLa cells were subjected to SDS PAGE followed by western blot with Catalog No:114335(PTTG1IP antibody) at dilution of 1:200



Immunohistochemical of paraffin-embedded human testis using Catalog No:114335(PTTG1IP antibody) at dilution of 1:50 (under 10x lens)



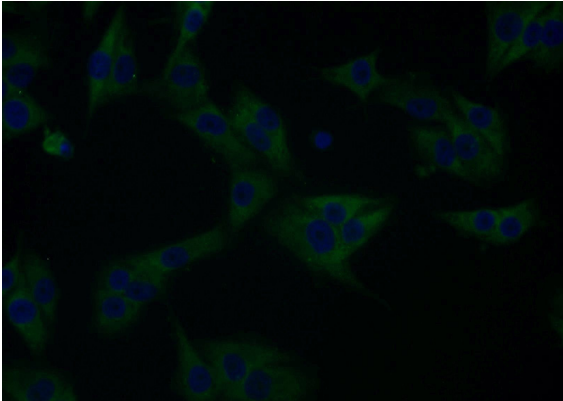
Immunohistochemical of paraffin-embedded human testis using Catalog No:114335(PTTG1IP antibody) at dilution of 1:50 (under 10x lens)

PTTG1IP antibody



Catalog Number: 114335

antibody) at dilution of 1:50 (under 40x lens)



Immunofluorescent analysis of A375 cells using Catalog No:114335(PTTG1IP Antibody) at dilution of 1:25 and Alexa Fluor 488-conjugated AffiniPure Goat Anti-Rabbit IgG(H+L)