

# PTRF antibody



Catalog Number: 114332

## Product name

PTRF antibody

## Specificity

Human, Mouse, Rat; other species not tested.

## Antibody description

PTRF Rabbit Polyclonal antibody. Positive IHC detected in human pancreas tissue. Positive IF detected in HepG2 cells. Positive IP detected in mouse lung tissue. Positive WB detected in A549 cells, HT-1080 cells, human heart tissue, mouse lung tissue, mouse skin tissue, rat heart tissue. Observed molecular weight by Western-blot: 50-55 kDa

## Preparation

This antibody was obtained by immunization of PTRF recombinant protein (Accession Number: BC008849). Purification method: Antigen affinity purified.

## Formulation

PBS with 0.02% sodium azide and 50% glycerol pH 7.3.

## Storage

Store at -20°C. DO NOT ALIQUOT

## Clonality

Polyclonal

## Ig Type

Rabbit IgG

## Applications

ELISA, WB, IHC, IF, IP

## Dilutions

Recommended Dilution:

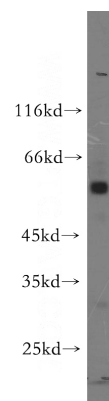
WB: 1:1000-1:10000

IP: 1:200-1:2000

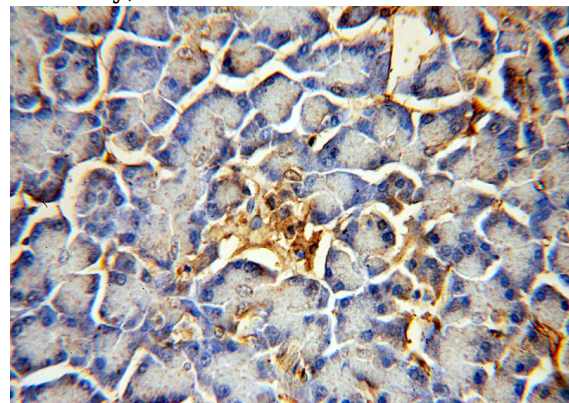
IHC: 1:20-1:200

IF: 1:10-1:100

## Validations



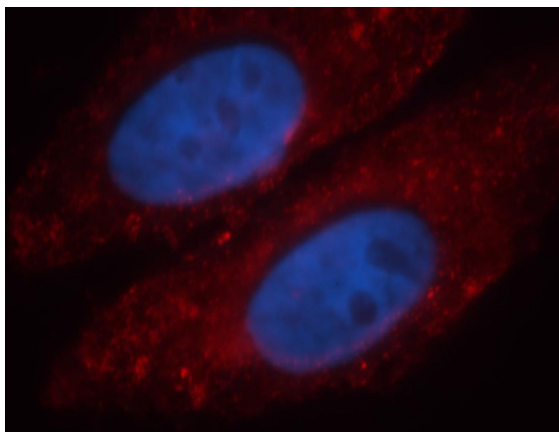
A549 cells were subjected to SDS PAGE followed by western blot with Catalog No:114332(PTRF antibody) at dilution of 1:1000



Immunohistochemical of paraffin-embedded human pancreas using Catalog No:114332(PTRF antibody) at dilution of 1:100 (under 40x lens)

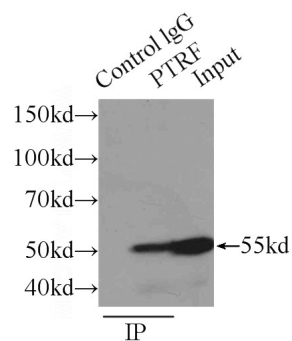
# PTRF antibody

Catalog Number: 114332



Immunofluorescent analysis of HepG2 cells, using PTRF antibody Catalog No:114332 at 1:25 dilution and Rhodamine-labeled goat anti-rabbit IgG (red).

Blue pseudocolor = DAPI (fluorescent DNA dye).



IP Result of anti-PTRF (IP:Catalog No:114332, 3ug; Detection:Catalog No:114332 1:800) with mouse lung tissue lysate 5160ug.