

PTP4A1/PRL1 antibody



Catalog Number: 114311

Product name

PTP4A1/PRL1 antibody

Immunogen

[Human PTP4A1 Recombinant protein \(GST tag\)](#)

Specificity

Human, Mouse, Rat; other species not tested.

Antibody description

PTP4A1/PRL1 Rabbit Polyclonal antibody. Positive IHC detected in human pancreas cancer tissue. Positive WB detected in MCF7 cells. Observed molecular weight by Western-blot: 22kd

Preparation

This antibody was obtained by immunization of PTP4A1/PRL1 recombinant protein (Accession Number: XM_017011270). Purification method: Antigen affinity purified.

Formulation

PBS with 0.02% sodium azide and 50% glycerol pH 7.3.

Storage

Store at -20°C. DO NOT ALIQUOT

Clonality

Polyclonal

Ig Type

Rabbit IgG

Applications

ELISA, WB, IHC

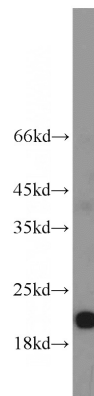
Dilutions

Recommended Dilution:

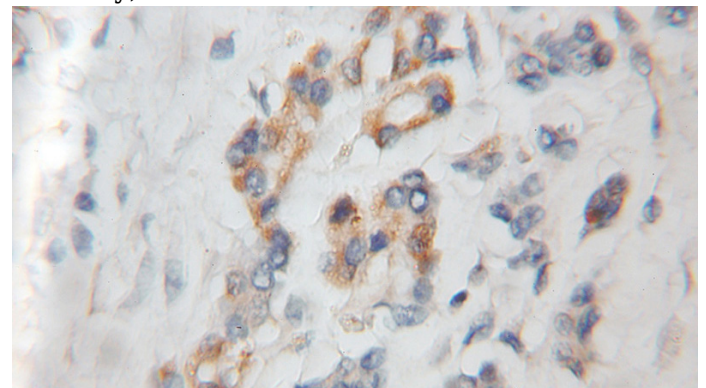
WB: 1:200-1:2000

IHC: 1:20-1:200

Validations



MCF7 cells were subjected to SDS PAGE followed by western blot with Catalog No:114311(PTP4A1 antibody) at dilution of 1:800



Immunohistochemical of paraffin-embedded human pancreas cancer using Catalog No:114311(PTP4A1 antibody) at dilution of 1:50 (under 10x lens)