

PSAT1 antibody



Catalog Number: 114294

Product name

PSAT1 antibody

WB: 1:200-1:2000

IP: 1:200-1:1000

Specificity

Human, Rat; other species not tested.

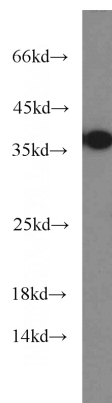
IHC: 1:10-1:100

IF: 1:20-1:200

Antibody description

PSAT1 Rabbit Polyclonal antibody. Positive IHC detected in human pancreas cancer tissue, human colon cancer tissue. Positive IF detected in HepG2 cells. Positive IP detected in HeLa cells. Positive WB detected in HepG2 cells, HEK-293 cells, HeLa cells, rat brain tissue. Observed molecular weight by Western-blot: 37-40 kDa

Validations



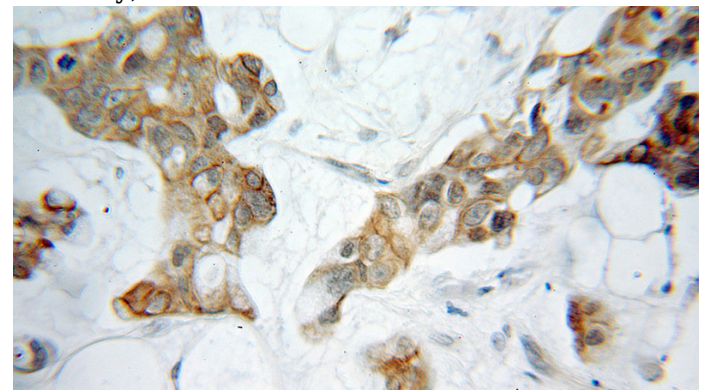
Preparation

This antibody was obtained by immunization of PSAT1 recombinant protein (Accession Number: NM_058179). Purification method: Antigen affinity purified.

HepG2 cells were subjected to SDS PAGE followed by western blot with Catalog No:114294(PSAT1 antibody) at dilution of 1:600

Formulation

PBS with 0.1% sodium azide and 50% glycerol pH 7.3.



Storage

Store at -20°C. DO NOT ALIQUOT

Clonality

Polyclonal

Ig Type

Rabbit IgG

Immunohistochemical of paraffin-embedded human pancreas cancer using Catalog No:114294(PSAT1 antibody) at dilution of 1:10 (under 10x lens)

Applications

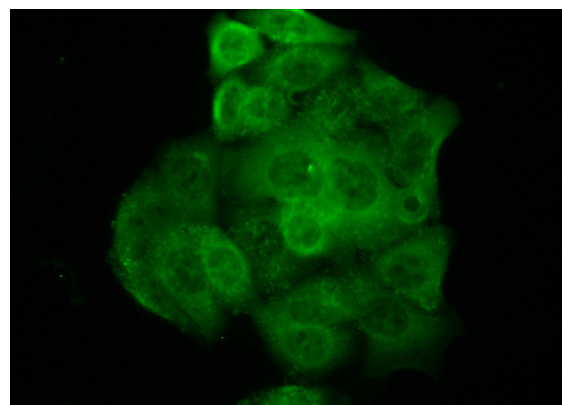
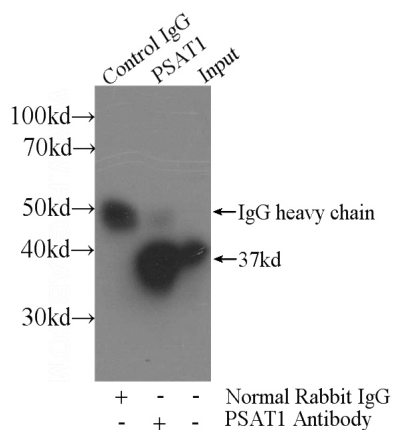
ELISA, IHC, WB, IP, IF

Dilutions

Recommended Dilution:

PSAT1 antibody

Catalog Number: 114294



Immunofluorescent analysis of HepG2 cells using Catalog No:114294(PSAT1 Antibody) at dilution of 1:50 and Alexa Fluor 488-conjugated AffiniPure Goat Anti-Rabbit IgG(H+L)

IP Result of anti-PSAT1 (IP:Catalog No:114294, 3ug; Detection:Catalog No:114294 1:300) with HeLa cells lysate 2480ug.