

# PSAPL1 antibody



Catalog Number: 114292

## Product name

PSAPL1 antibody

## Specificity

Human; other species not tested.

## Antibody description

PSAPL1 Rabbit Polyclonal antibody. Positive WB detected in human testis tissue, HeLa cells. Observed molecular weight by Western-blot: 57-63kd

## Preparation

This antibody was obtained by immunization of Peptide (Accession Number: NM\_001085382). Purification method: Antigen affinity purified.

## Formulation

PBS with 0.02% sodium azide and 50% glycerol pH 7.3.

## Storage

Store at -20°C. DO NOT ALIQUOT

## Clonality

Polyclonal

## Ig Type

Rabbit IgG

## Applications

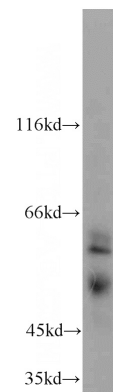
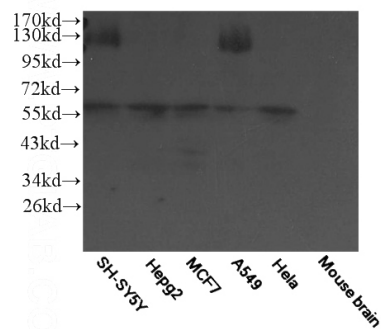
ELISA, WB

## Dilutions

Recommended Dilution:

WB: 1:200-1:2000

## Validations



WB result of Catalog No:114292.

human testis tissue were subjected to SDS PAGE followed by western blot with Catalog No:114292(PSAPL1 antibody) at dilution of 1:200