

# PSAP antibody

Catalog Number: 114288

## General Information

### Product name:

PSAP antibody

### Immunogen:

### Applications:

ELISA, IHC, WB

### Specificity:

Human, Mouse, Rat; other species not tested.

### Antibody description:

PSAP Rabbit Polyclonal antibody. Positive WB detected in HepG2 cells, HEK-293 cells, HeLa cells. Positive IHC detected in human liver cancer tissue. Observed molecular weight by Western-blot: 60-70 kDa

## Properties

### Preparation:

This antibody was obtained by immunization of PSAP recombinant protein (Accession Number: BC001503). Purification method: Antigen affinity purified.

### Formulation:

PBS with 0.02% sodium azide and 50% glycerol pH 7.3.

### Storage:

Store at -20°C. DO NOT ALIQUOT

### Clonality:

Polyclonal

**Ig Type:** Rabbit IgG

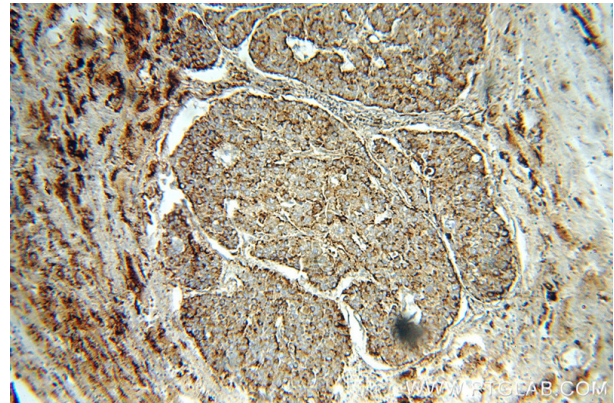
## Applications

Recommended Dilution:

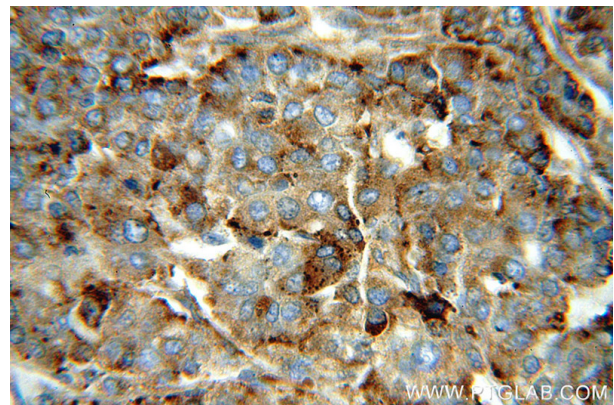
WB: 1:200-1:2000

IHC: 1:20-1:200

## Validations



Immunohistochemical of paraffin-embedded human liver cancer using Catalog No:114288(PSAP antibody) at dilution of 1:50 (under 10x lens)



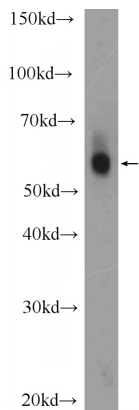
Immunohistochemical of paraffin-embedded human liver cancer using Catalog No:114288(PSAP antibody) at dilution of 1:50 (under 40x lens)

# PSAP antibody



Catalog Number: 114288

---



HepG2 cells were subjected to SDS PAGE followed by western blot with Catalog No:114288(PSAP Antibody) at dilution of 1:600