

PRSS8 antibody

Catalog Number: 114281

Product name

PRSS8 antibody

Specificity

Human, Mouse, Rat; other species not tested.

Antibody description

PRSS8 Rabbit Polyclonal antibody. Positive WB detected in human colon tissue, mouse kidney tissue. Positive IHC detected in human prostate cancer tissue, human ovary tumor tissue. Observed molecular weight by Western-blot: 39 kDa

Preparation

This antibody was obtained by immunization of PRSS8 recombinant protein (Accession Number: NM_002773). Purification method: Antigen affinity purified.

Formulation

PBS with 0.02% sodium azide and 50% glycerol pH 7.3.

Storage

Store at -20°C. DO NOT ALIQUOT

Clonality

Polyclonal

Ig Type

Rabbit IgG

Applications

ELISA, WB, IHC

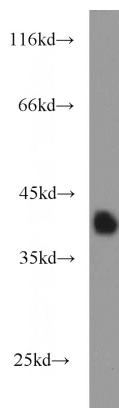
Dilutions

Recommended Dilution:

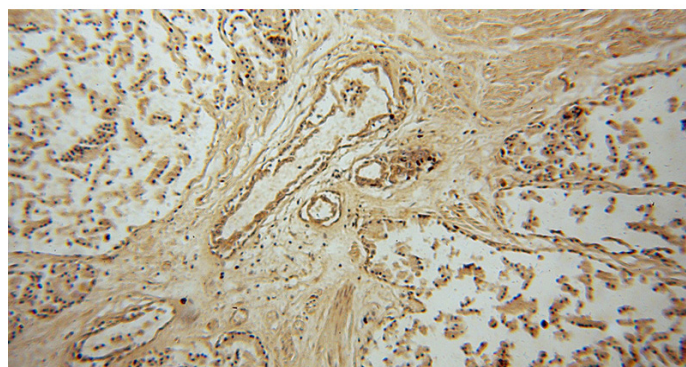
WB: 1:200-1:2000

IHC: 1:20-1:200

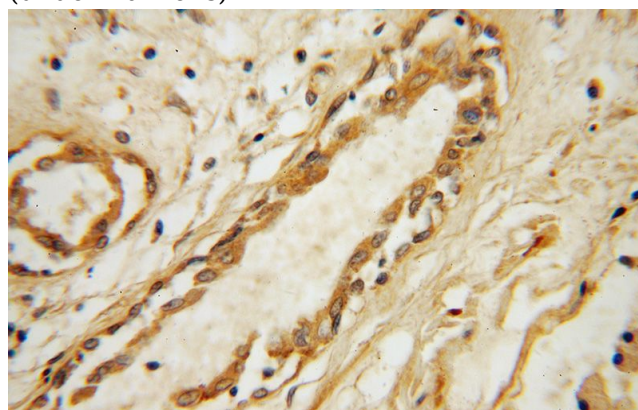
Validations



human colon tissue were subjected to SDS PAGE followed by western blot with Catalog No:114281 (PRSS8 antibody) at dilution of 1:500



Immunohistochemical of paraffin-embedded human prostate cancer using Catalog No:114281 (PRSS8 antibody) at dilution of 1:50 (under 10x lens)



Immunohistochemical of paraffin-embedded human prostate cancer using Catalog No:114281 (PRSS8 antibody) at dilution of 1:50

PRSS8 antibody



Catalog Number: 114281

(under 40x lens)