

# PTER antibody

Catalog Number: 114265

## Product name

PTER antibody

IHC: 1:20-1:200

IF: 1:50-1:500

## Specificity

Human, Mouse, Rat; other species not tested.

## Antibody description

PTER Rabbit Polyclonal antibody. Positive WB detected in HEK-293 cells, mouse kidney tissue. Positive IHC detected in human ovary tumor tissue. Positive IF detected in HEK-293 cells. Observed molecular weight by Western-blot: 33 kDa, 39 kDa

## Preparation

This antibody was obtained by immunization of PTER recombinant protein (Accession Number: NM\_030664). Purification method: Antigen affinity purified.

## Formulation

PBS with 0.1% sodium azide and 50% glycerol pH 7.3.

## Storage

Store at -20°C. DO NOT ALIQUOT

## Clonality

Polyclonal

## Ig Type

Rabbit IgG

## Applications

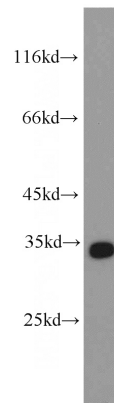
ELISA, WB, IHC, IF

## Dilutions

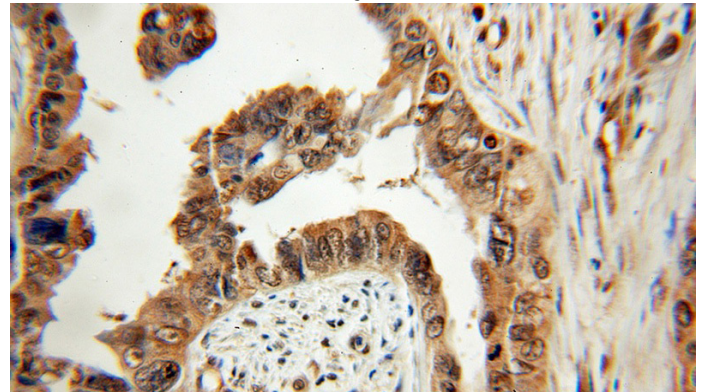
Recommended Dilution:

WB: 1:200-1:2000

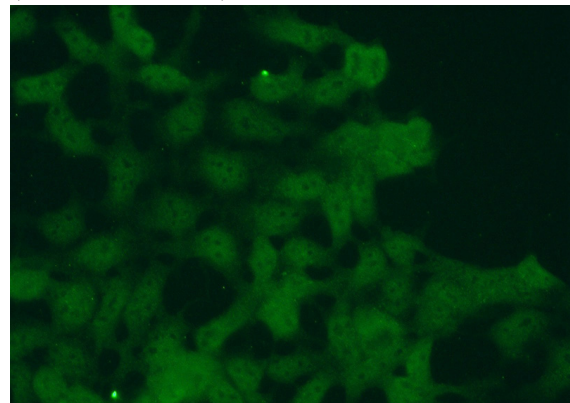
## Validations



HEK-293 cells were subjected to SDS PAGE followed by western blot with Catalog No:114265(PTER antibody) at dilution of 1:400



Immunohistochemical of paraffin-embedded human ovary tumor using Catalog No:114265(PTER antibody) at dilution of 1:50 (under 10x lens)



Immunofluorescent analysis of (10%

# PTER antibody



Catalog Number: 114265

---

Formaldehyde) fixed HEK-293 cells using Catalog No:114265(PTER Antibody) at dilution of 1:50 and

Alexa Fluor 488-conjugated AffiniPure Goat Anti-Rabbit IgG(H+L)