

PSMD6 antibody

Catalog Number: 114244

Product name

PSMD6 antibody

Specificity

Human, Mouse, Rat; other species not tested.

Antibody description

PSMD6 Rabbit Polyclonal antibody. Positive WB detected in Jurkat cells, human kidney tissue, human placenta tissue. Positive IP detected in K-562 cells. Observed molecular weight by Western-blot: 46kd

Preparation

This antibody was obtained by immunization of PSMD6 recombinant protein (Accession Number: NM_014814). Purification method: Antigen affinity purified.

Formulation

PBS with 0.1% sodium azide and 50% glycerol pH 7.3.

Storage

Store at -20°C. DO NOT ALIQUOT

Clonality

Polyclonal

Ig Type

Rabbit IgG

Applications

ELISA, WB, IP

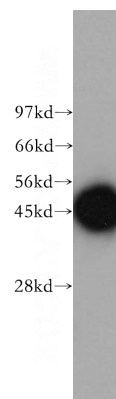
Dilutions

Recommended Dilution:

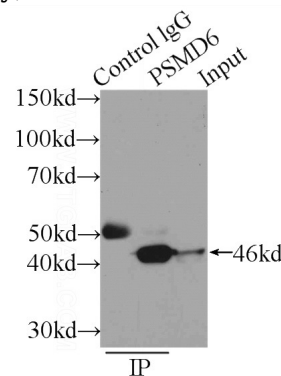
WB: 1:1000-1:10000

IP: 1:200-1:2000

Validations



Jurkat cells were subjected to SDS PAGE followed by western blot with Catalog No:114244(PSMD6 antibody) at dilution of 1:500



IP Result of anti-PSMD6 (IP:Catalog No:114244, 3ug; Detection:Catalog No:114244 1:500) with K-562 cells lysate 1500ug.