

# PRPS1L1 antibody



Catalog Number: 114238

---

## Product name

PRPS1L1 antibody

## Specificity

human, mouse, rat; other species not tested.

## Antibody description

PRPS1L1 Rabbit Polyclonal antibody. Positive WB detected in human testis tissue, NIH/3T3 cells. Observed molecular weight by Western-blot: 35kd

## Preparation

This antibody was obtained by immunization of PRPS1L1 recombinant protein (Accession Number: NM\_175886). Purification method: Antigen affinity purified.

## Formulation

PBS with 0.02% sodium azide and 50% glycerol pH 7.3.

## Storage

Store at -20°C. DO NOT ALIQUOT

## Clonality

Polyclonal

## Ig Type

Rabbit IgG

## Applications

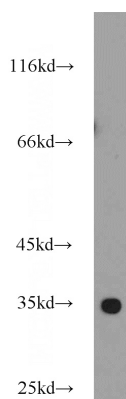
ELISA, WB

## Dilutions

Recommended Dilution:

WB: 1:200-1:2000

## Validations



human testis tissue were subjected to SDS PAGE followed by western blot with Catalog No:114238(PRPS1L1 antibody) at dilution of 1:1000