

PRPF3 antibody

Catalog Number: 114228

Product name

PRPF3 antibody

Specificity

Human, Mouse, Rat; other species not tested.

Antibody description

PRPF3 Rabbit Polyclonal antibody. Positive WB detected in Y79 cells, HepG2 cells, L02 cells, mouse brain tissue, mouse liver tissue. Positive IP detected in mouse liver tissue. Observed molecular weight by Western-blot: 90 kDa or 78 kDa

Preparation

This antibody was obtained by immunization of PRPF3 recombinant protein (Accession Number: XM_047433995). Purification method: Antigen affinity purified.

Formulation

PBS with 0.1% sodium azide and 50% glycerol pH 7.3.

Storage

Store at -20°C. DO NOT ALIQUOT

Clonality

Polyclonal

Ig Type

Rabbit IgG

Applications

ELISA, WB, IP

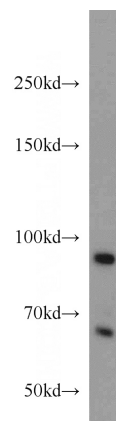
Dilutions

Recommended Dilution:

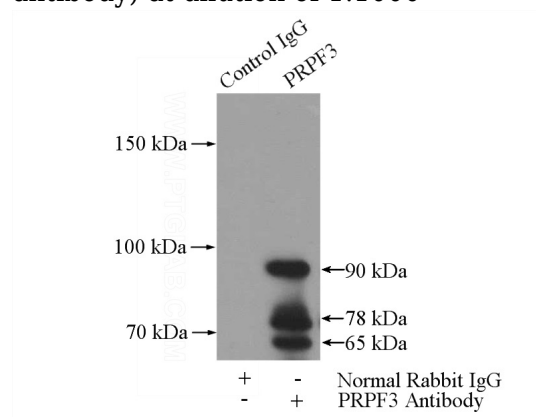
WB: 1:500-1:5000

IP: 1:200-1:2000

Validations



Y79 cells were subjected to SDS PAGE followed by western blot with Catalog No:114228 (PRPF3 antibody) at dilution of 1:1000



IP Result of anti-PRPF3 (IP: Catalog No:114228, 5ug; Detection: Catalog No:114228 1:500) with mouse liver tissue lysate 4000ug.