

# prohibitin 2 antibody



Catalog Number: 114217

## Product name

prohibitin 2 antibody

Recommended Dilution:

WB: 1:500-1:5000

## Specificity

Human, Mouse, Rat; other species not tested.

IP: 1:500-1:5000

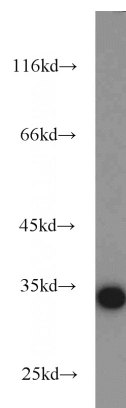
IHC: 1:20-1:200

## Antibody description

prohibitin 2 Rabbit Polyclonal antibody. Positive IF detected in HepG2 cells. Positive IHC detected in human colon tissue, human breast cancer tissue. Positive WB detected in HeLa cells, BxPC-3 cells, human brain tissue, K-562 cells, MCF7 cells, mouse heart tissue, mouse stomach tissue. Positive IP detected in HeLa cells. Observed molecular weight by Western-blot: 33 kDa

IF: 1:20-1:200

## Validations



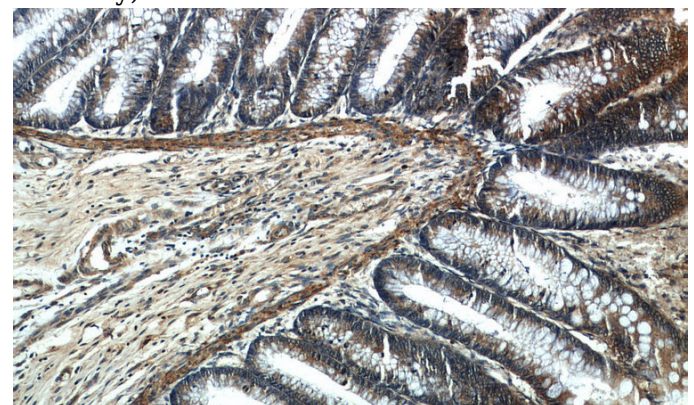
## Preparation

This antibody was obtained by immunization of prohibitin 2 recombinant protein (Accession Number: NM\_001144831). Purification method: Antigen affinity purified.

HeLa cells were subjected to SDS PAGE followed by western blot with Catalog No:114217(PHB2 antibody) at dilution of 1:1000

## Formulation

PBS with 0.1% sodium azide and 50% glycerol pH 7.3.



## Storage

Store at -20°C. DO NOT ALIQUOT

## Clonality

Polyclonal

## Ig Type

Rabbit IgG

Immunohistochemistry of paraffin-embedded human colon slide using Catalog No:114217(PHB2 Antibody) at dilution of 1:50

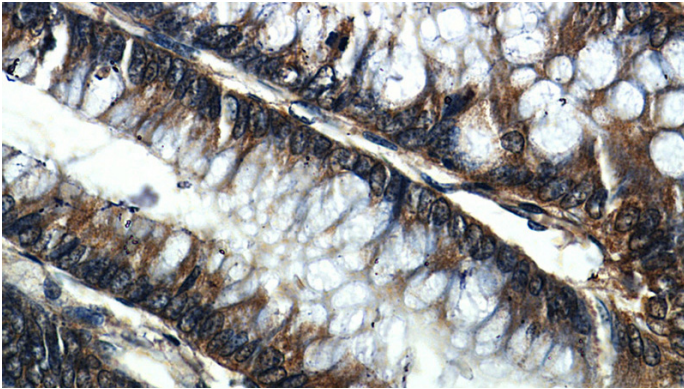
## Applications

ELISA, IF, IP, IHC, WB

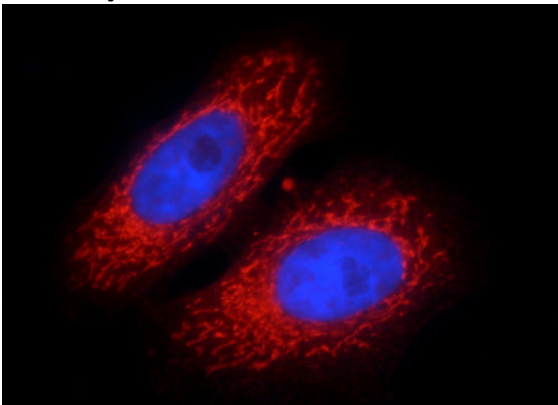
## Dilutions

# prohibitin 2 antibody

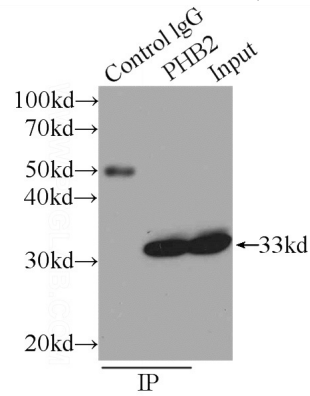
Catalog Number: 114217



Immunohistochemistry of paraffin-embedded human colon slide using Catalog No:114217(PHB2 Antibody) at dilution of 1:50



Immunofluorescent analysis of HepG2 cells, using PHB2 antibody Catalog No:114217 at 1:50 dilution and Rhodamine-labeled goat anti-rabbit IgG (red). Blue pseudocolor = DAPI (fluorescent DNA dye).



IP Result of anti-PHB2 (IP:Catalog No:114217, 3ug; Detection:Catalog No:114217 1:1000) with HeLa cells lysate 1840ug.