

PRMT6 antibody



Catalog Number: 114208

Product name

PRMT6 antibody

Recommended Dilution:

WB: 1:200-1:2000

Specificity

Human; other species not tested.

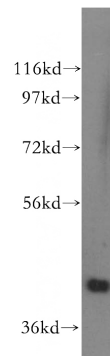
IP: 1:500-1:5000

IHC: 1:50-1:500

Antibody description

PRMT6 Rabbit Polyclonal antibody. Positive IP detected in HEK-293 cells. Positive WB detected in human brain tissue, HEK-293 cells, HeLa cells, human kidney tissue, human testis tissue, MCF7 cells. Positive IHC detected in human breast cancer tissue, human kidney tissue, human testis tissue. Observed molecular weight by Western-blot: 42 kDa

Validations



Preparation

This antibody was obtained by immunization of PRMT6 recombinant protein (Accession Number: BC002729). Purification method: Antigen affinity purified.

human brain tissue were subjected to SDS PAGE followed by western blot with Catalog No:114208(PRMT6 antibody) at dilution of 1:500

Formulation

PBS with 0.02% sodium azide and 50% glycerol pH 7.3.

Storage

Store at -20°C. DO NOT ALIQUOT

Clonality

Polyclonal

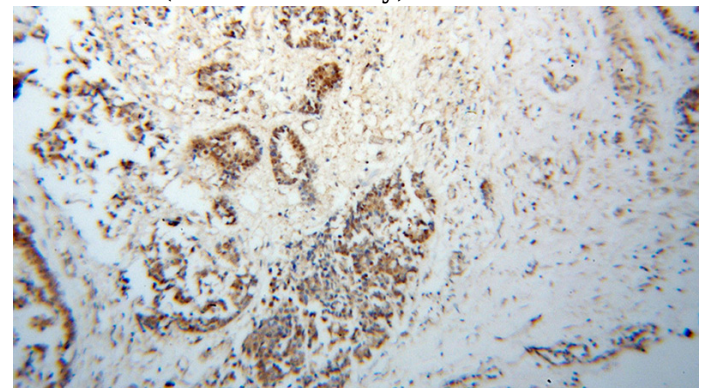
Ig Type

Rabbit IgG

Applications

ELISA, WB, IHC, IP

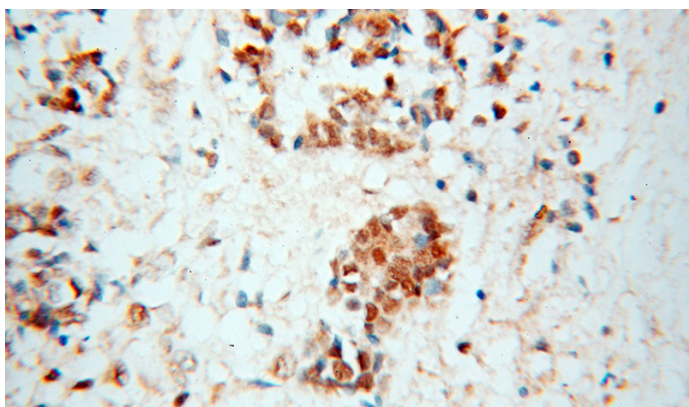
Dilutions



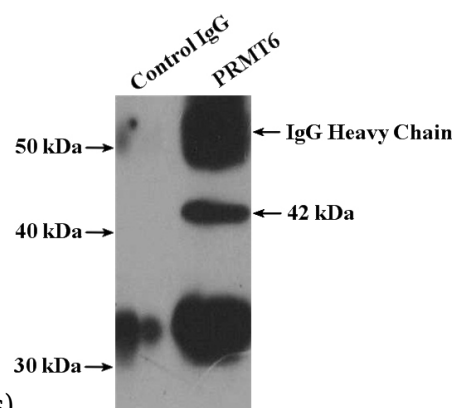
Immunohistochemical of paraffin-embedded human breast cancer using Catalog No:114208(PRMT6 antibody) at dilution of 1:100 (under 10x lens)

PRMT6 antibody

Catalog Number: 114208



Immunohistochemical of paraffin-embedded human breast cancer using Catalog No:114208(PRMT6 antibody) at dilution of 1:100



(under 40x lens)

IP Result of anti-PRMT6 (IP:Catalog No:114208, 4ug; Detection:Catalog No:114208 1:1500) with HEK-293 cells lysate 2400ug.