

PREB antibody

Catalog Number: 114180

Product name

PREB antibody

Immunogen

[Human PREB Recombinant protein \(GST tag\)](#)

Specificity

Human, Mouse; other species not tested.

Antibody description

PREB Rabbit Polyclonal antibody. Positive WB detected in SKOV-3 cells, 3T3-L1 cells, HepG2 cells, HT-1080 cells. Positive IHC detected in human prostate cancer tissue, human ovary tumor tissue. Positive IF detected in HepG2 cells. Observed molecular weight by Western-blot: 45 kDa

Preparation

This antibody was obtained by immunization of PREB recombinant protein (Accession Number: NM_013388). Purification method: Antigen affinity purified.

Formulation

PBS with 0.1% sodium azide and 50% glycerol pH 7.3.

Storage

Store at -20°C. DO NOT ALIQUOT

Clonality

Polyclonal

Ig Type

Rabbit IgG

Applications

ELISA, WB, IHC, IF

Dilutions

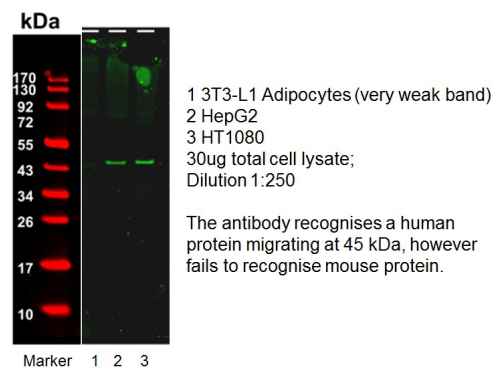
Recommended Dilution:

WB: 1:200-1:2000

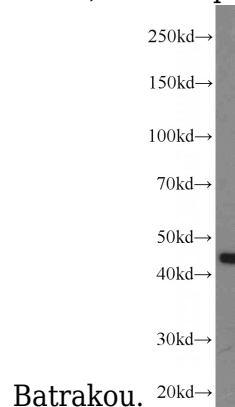
IHC: 1:20-1:200

IF: 1:10-1:100

Validations



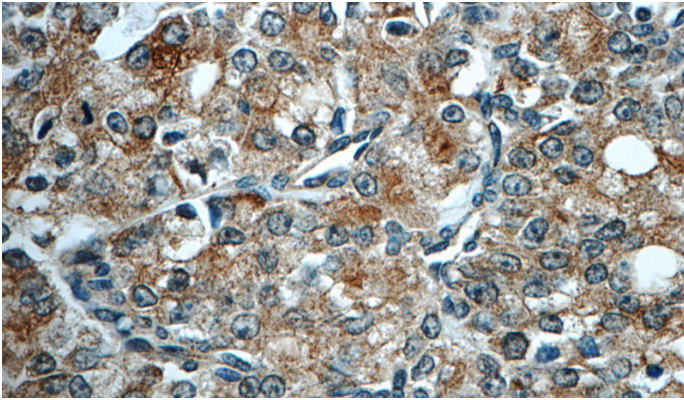
WB result of anti-PREB (Catalog No:114180, 1:250) with HepG2 and HT1080 by Dr. Dzmitry



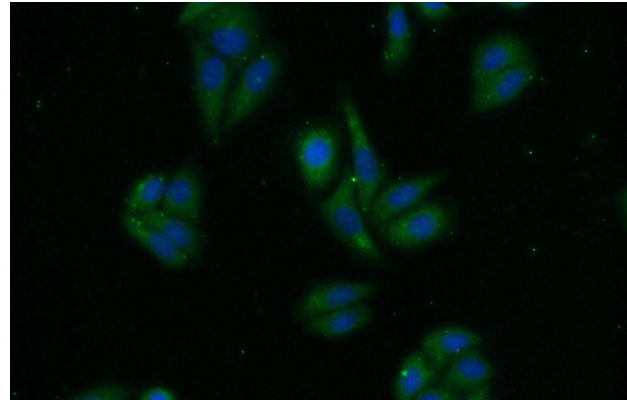
SKOV-3 cells were subjected to SDS PAGE followed by western blot with Catalog No:114180(PREB antibody) at dilution of 1:600

PREB antibody

Catalog Number: 114180



Immunohistochemistry of paraffin-embedded human prostate cancer tissue slide using Catalog No:114180(PREB Antibody) at dilution of 1:50 (under 40x lens)



Immunofluorescent analysis of HepG2 cells using Catalog No:114180(PREB Antibody) at dilution of 1:25 and Alexa Fluor 488-conjugated AffiniPure Goat Anti-Rabbit IgG(H+L)