

PRDX4 antibody

Catalog Number: 114177

Product name

PRDX4 antibody

WB: 1:200-1:2000

IP: 1:200-1:2000

Specificity

Human, Mouse, Rat; other species not tested.

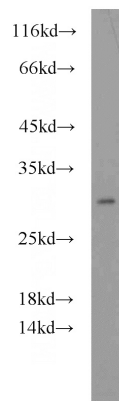
IHC: 1:20-1:200

IF: 1:20-1:200

Antibody description

PRDX4 Rabbit Polyclonal antibody. Positive FC detected in HepG2 cells. Positive IHC detected in human pancreas cancer tissue, human prostate cancer tissue. Positive IF detected in HepG2 cells. Positive WB detected in HepG2 cells. Positive IP detected in HepG2 cells. Observed molecular weight by Western-blot: 30kd

Validations



Preparation

This antibody was obtained by immunization of PRDX4 recombinant protein (Accession Number: NM_006406). Purification method: Antigen affinity purified.

HepG2 cells were subjected to SDS PAGE followed by western blot with Catalog No:114177(PRDX4 antibody) at dilution of 1:800

Formulation

PBS with 0.1% sodium azide and 50% glycerol pH 7.3.

Storage

Store at -20°C. DO NOT ALIQUOT

Clonality

Polyclonal

Ig Type

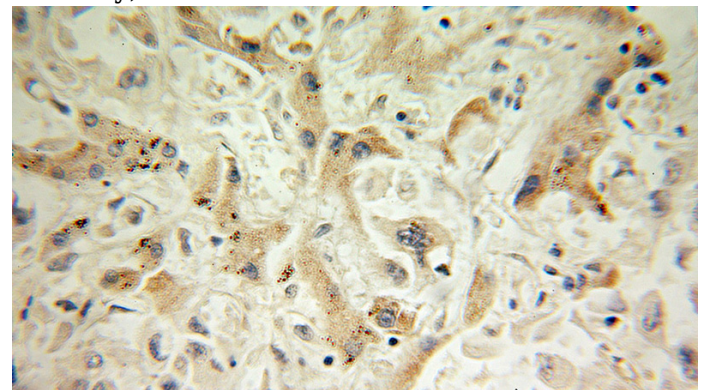
Rabbit IgG

Applications

ELISA, WB, IHC, IF, FC, IP

Dilutions

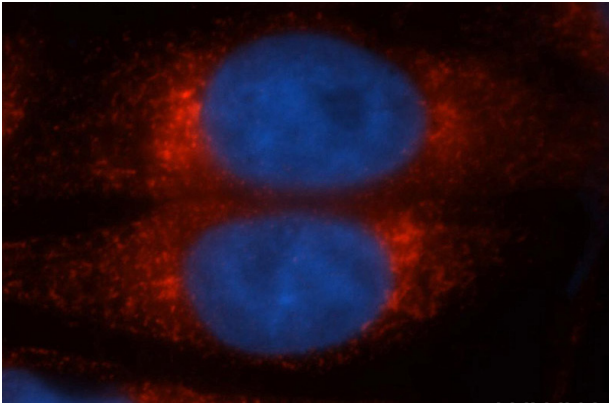
Recommended Dilution:



Immunohistochemical of paraffin-embedded human pancreas cancer using Catalog No:114177(PRDX4 antibody) at dilution of 1:100 (under 10x lens)

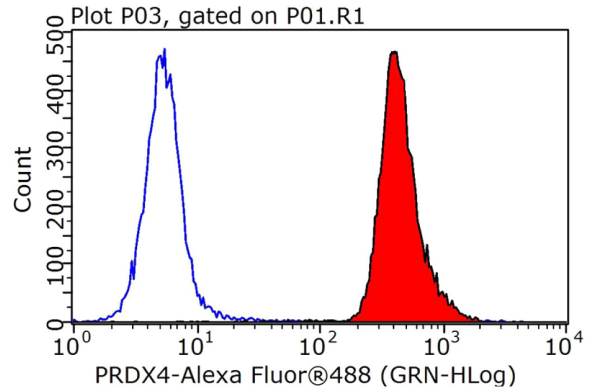
PRDX4 antibody

Catalog Number: 114177

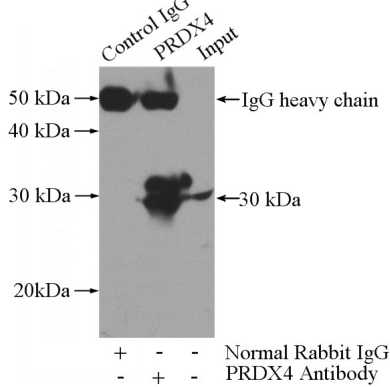


Immunofluorescent analysis of HepG2 cells, using PRDX4 antibody Catalog No:114177 at 1:50 dilution and Rhodamine-labeled goat anti-rabbit IgG (red). Blue pseudocolor = DAPI (fluorescent

IP Result of anti-PRDX4 (IP:Catalog No:114177, 3ug; Detection:Catalog No:114177 1:500) with HepG2 cells lysate 4000ug.



1X10⁶ HepG2 cells were stained with 0.2ug PRDX4 antibody (Catalog No:114177, red) and control antibody (blue). Fixed with 90% MeOH blocked with 3% BSA (30 min). Alexa Fluor 488-conjugated AffiniPure Goat Anti-Rabbit IgG(H+L) with dilution 1:1000.



DNA dye).