

PRC1 antibody

Catalog Number: 114169

Product name

PRC1 antibody

IP: 1:200-1:1000

IHC: 1:20-1:200

Specificity

Human; other species not tested.

IF: 1:20-1:200

Antibody description

PRC1 Rabbit Polyclonal antibody. Positive IHC detected in human breast cancer tissue. Positive IF detected in HepG2 cells. Positive WB detected in HEK-293 cells, HepG2 cells. Positive IP detected in HEK-293 cells. Observed molecular weight by Western-blot: 66 kDa

Preparation

This antibody was obtained by immunization of PRC1 recombinant protein (Accession Number: NM_003981). Purification method: Antigen affinity purified.

Formulation

PBS with 0.02% sodium azide and 50% glycerol pH 7.3.

Storage

Store at -20°C. DO NOT ALIQUOT

Clonality

Polyclonal

Ig Type

Rabbit IgG

Applications

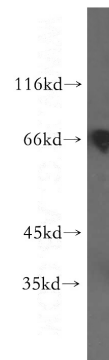
ELISA, WB, IHC, IP, IF

Dilutions

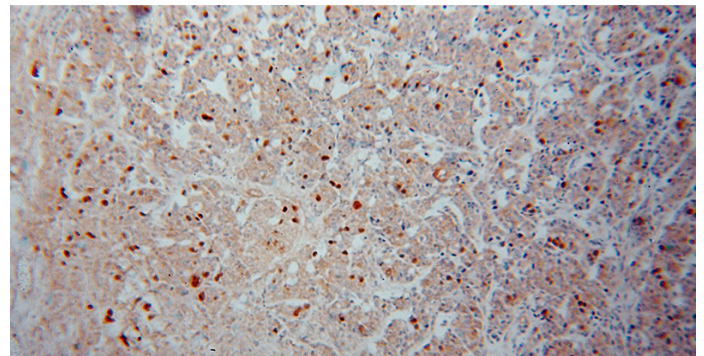
Recommended Dilution:

WB: 1:500-1:5000

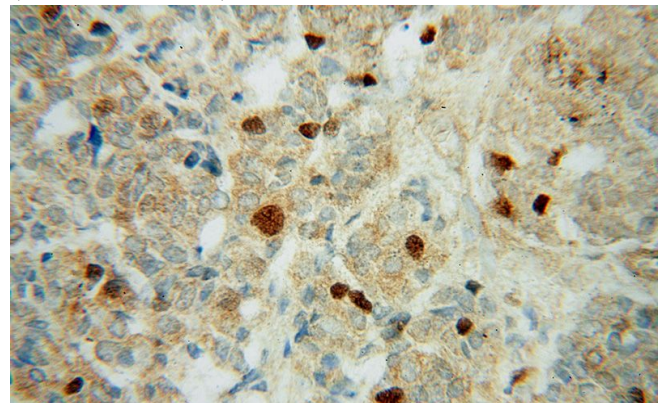
Validations



HEK-293 cells were subjected to SDS PAGE followed by western blot with Catalog No:114169(PRC1 antibody) at dilution of 1:300



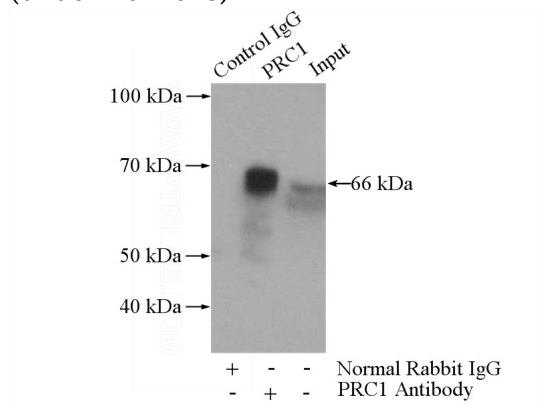
Immunohistochemical of paraffin-embedded human breast cancer using Catalog No:114169(PRC1 antibody) at dilution of 1:50 (under 10x lens)



PRC1 antibody

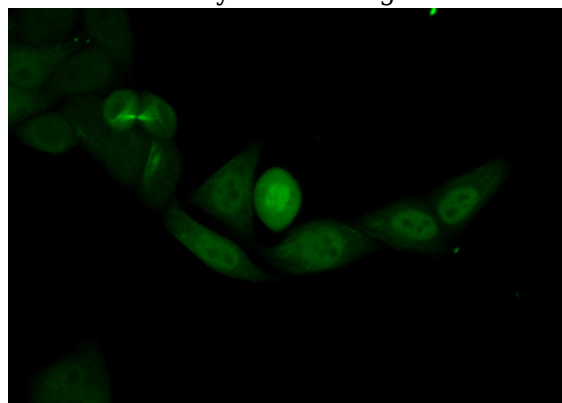
Catalog Number: 114169

Immunohistochemical of paraffin-embedded human breast cancer using Catalog No:114169(PRC1 antibody) at dilution of 1:50 (under 40x lens)



IP Result of anti-PRC1 (IP:Catalog No:114169, 4ug; Detection:Catalog No:114169 1:300) with

HEK-293 cells lysate 1480ug.



Immunofluorescent analysis of (10% Formaldehyde) fixed HepG2 cells using Catalog No:114169(PRC1 Antibody) at dilution of 1:50 and Alexa Fluor 488-conjugated AffiniPure Goat Anti-Rabbit IgG(H+L)