

# PPP1R13L antibody



Catalog Number: 114150

## Product name

PPP1R13L antibody

## Specificity

Human, Mouse; other species not tested.

## Antibody description

PPP1R13L Rabbit Polyclonal antibody. Positive WB detected in human heart tissue, HEK-293 cells, mouse testis tissue. Positive IHC detected in human breast cancer tissue. Observed molecular weight by Western-blot: 110kd

## Preparation

This antibody was obtained by immunization of PPP1R13L recombinant protein (Accession Number: NM\_006663). Purification method: Antigen affinity purified.

## Formulation

PBS with 0.1% sodium azide and 50% glycerol pH 7.3.

## Storage

Store at -20°C. DO NOT ALIQUOT

## Clonality

Polyclonal

## Ig Type

Rabbit IgG

## Applications

ELISA, WB, IHC

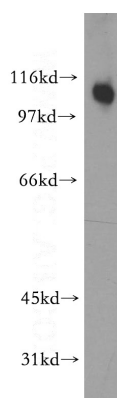
## Dilutions

Recommended Dilution:

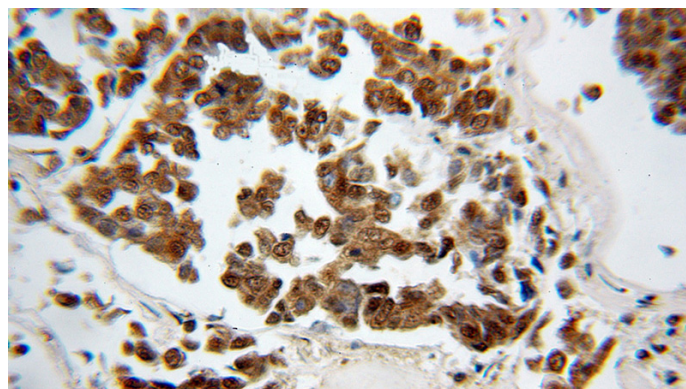
WB: 1:500-1:5000

IHC: 1:20-1:200

## Validations



human heart tissue were subjected to SDS PAGE followed by western blot with Catalog No:114150(PPP1R13L antibody) at dilution of 1:200



Immunohistochemical of paraffin-embedded human breast cancer using Catalog No:114150(PPP1R13L antibody) at dilution of 1:50 (under 10x lens)