

# PPP1R11-Specific antibody



Catalog Number: 114147

## Product name

PPP1R11-Specific antibody

## Specificity

human, mouse; other species not tested.

## Antibody description

PPP1R11-Specific Rabbit Polyclonal antibody. Positive WB detected in HeLa cells, A431 cells, mouse liver tissue. Observed molecular weight by Western-blot: 25-30kd

## Preparation

This antibody was obtained by immunization of Peptide (Accession Number: NM\_021959). Purification method: Antigen affinity purified.

## Formulation

PBS with 0.02% sodium azide and 50% glycerol pH 7.3.

## Storage

Store at -20°C. DO NOT ALIQUOT

## Clonality

Polyclonal

## Ig Type

Rabbit IgG

## Applications

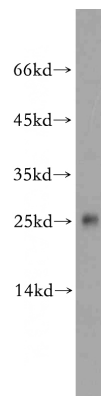
ELISA, WB

## Dilutions

Recommended Dilution:

WB: 1:200-1:1000

## Validations



HeLa cells were subjected to SDS PAGE followed by western blot with Catalog No:114147(PPP1R11-Specific antibody) at dilution of 1:100