

# PPP4R2 antibody

Catalog Number: 114117

## Product name

PPP4R2 antibody

IP: 1:500-1:5000

IHC: 1:20-1:200

## Specificity

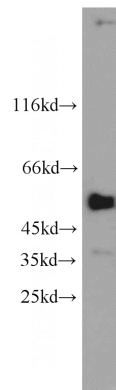
Human; other species not tested.

IF: 1:50-1:500

## Antibody description

PPP4R2 Rabbit Polyclonal antibody. Positive IP detected in HepG2 cells. Positive WB detected in A549 cells, HepG2 cells. Positive IF detected in HepG2 cells. Positive IHC detected in human liver cancer tissue, human pancreas tissue. Observed molecular weight by Western-blot: 65 kDa

## Validations



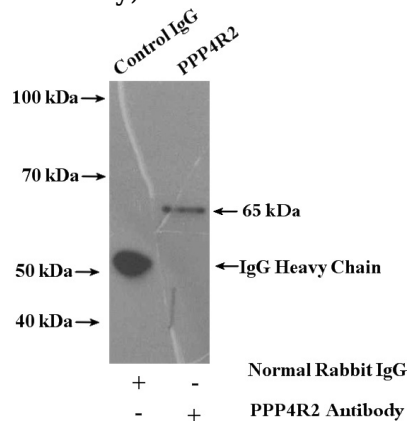
## Preparation

This antibody was obtained by immunization of PPP4R2 recombinant protein (Accession Number: NM\_001318025). Purification method: Antigen affinity purified.

A549 cells were subjected to SDS PAGE followed by western blot with Catalog No:114117(PPP4R2 antibody) at dilution of 1:1000

## Formulation

PBS with 0.02% sodium azide and 50% glycerol pH 7.3.



## Storage

Store at -20°C. DO NOT ALIQUOT

## Clonality

Polyclonal

## Ig Type

Rabbit IgG

## Applications

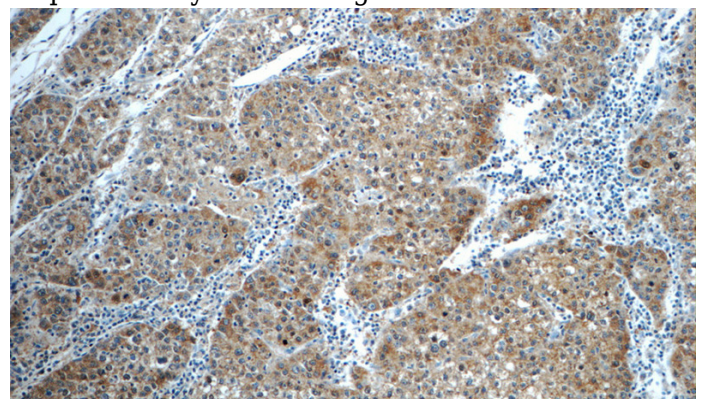
ELISA, WB, IHC, IF, IP

## Dilutions

Recommended Dilution:

WB: 1:500-1:5000

IP Result of anti-PPP4R2 (IP:Catalog No:114117, 4ug; Detection:Catalog No:114117 1:1000) with HepG2 cells lysate 3600ug.

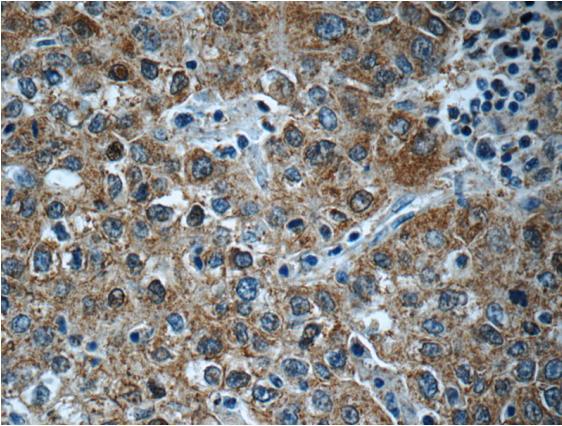


# PPP4R2 antibody

Catalog Number: 114117

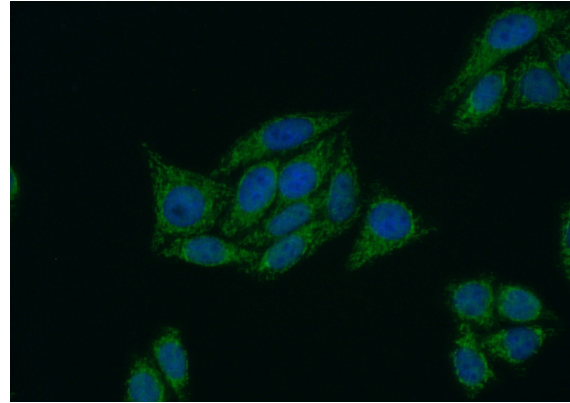
---

Immunohistochemistry of paraffin-embedded human liver cancer tissue slide using Catalog No:114117(PPP4R2 Antibody) at dilution of 1:50 (under 10x lens)



Immunohistochemistry of paraffin-embedded human liver cancer tissue slide using Catalog

No:114117(PPP4R2 Antibody) at dilution of 1:50 (under 40x lens)



Immunofluorescent analysis of (10% Formaldehyde) fixed HepG2 cells using Catalog No:114117(PPP4R2 Antibody) at dilution of 1:50 and Alexa Fluor 488-conjugated AffiniPure Goat Anti-Rabbit IgG(H+L)