

PPP2R5A antibody



Catalog Number: 114105

Product name

PPP2R5A antibody

WB: 1:1000-1:10000

IP: 1:200-1:2000

Specificity

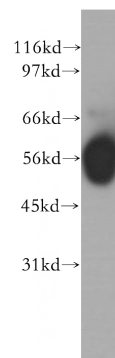
Human, Mouse, Rat; other species not tested.

IHC: 1:20-1:200

Antibody description

PPP2R5A Rabbit Polyclonal antibody. Positive WB detected in human ileum tissue, human brain tissue, human heart tissue, human kidney tissue, human lung tissue. Positive IP detected in mouse brain tissue. Positive IHC detected in human pancreas cancer tissue. Observed molecular weight by Western-blot: 56 kDa

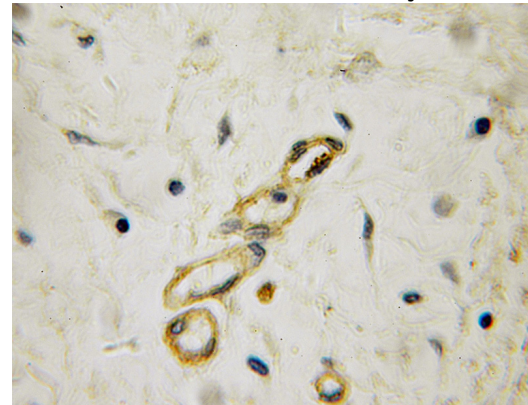
Validations



Preparation

This antibody was obtained by immunization of PPP2R5A recombinant protein (Accession Number: NM_006243). Purification method: Antigen affinity purified.

human ileum tissue were subjected to SDS PAGE followed by western blot with Catalog No:114105(PPP2R5A antibody) at dilution of 1:400



Formulation

PBS with 0.1% sodium azide and 50% glycerol pH 7.3.

Storage

Store at -20°C. DO NOT ALIQUOT

Clonality

Polyclonal

Ig Type

Rabbit IgG

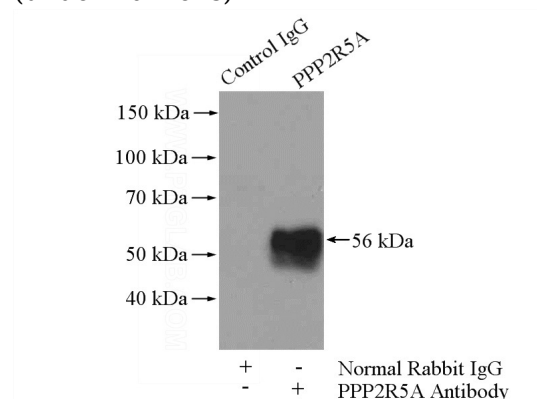
Applications

ELISA, WB, IHC, IP

Dilutions

Recommended Dilution:

Immunohistochemical of paraffin-embedded human pancreas cancer using Catalog No:114105(PPP2R5A antibody) at dilution of 1:50 (under 10x lens)



PPP2R5A antibody



Catalog Number: 114105

IP Result of anti-PPP2R5A (IP:Catalog No:114105, 4ug; Detection:Catalog No:114105 1:500) with mouse brain tissue lysate 4000ug.