

# PPP2R3A antibody



Catalog Number: 114102

## Product name

PPP2R3A antibody

WB: 1:500-1:5000

IHC: 1:20-1:200

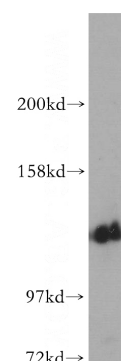
## Specificity

Human; other species not tested.

## Validations

## Antibody description

PPP2R3A Rabbit Polyclonal antibody. Positive IHC detected in human skin tissue, human brain tissue, human kidney tissue, human lung tissue, human ovary tissue, human placenta tissue, human spleen tissue, human testis tissue. Positive WB detected in PC-3 cells, MCF7 cells. Observed molecular weight by Western-blot: 130kd



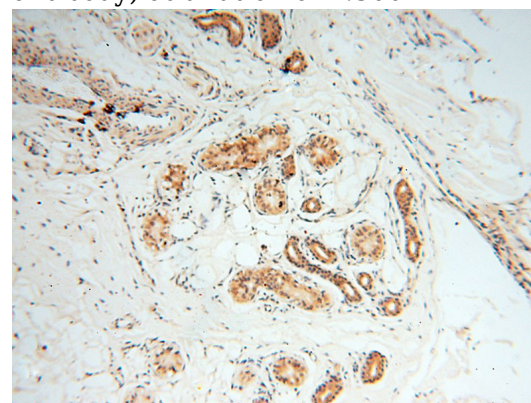
## Preparation

This antibody was obtained by immunization of PPP2R3A recombinant protein (Accession Number: XM\_006713686). Purification method: Antigen affinity purified.

PC-3 cells were subjected to SDS PAGE followed by western blot with Catalog No:114102(PPP2R3A antibody) at dilution of 1:300

## Formulation

PBS with 0.02% sodium azide and 50% glycerol pH 7.3.



## Storage

Store at -20°C. DO NOT ALIQUOT

## Clonality

Polyclonal

## Ig Type

Rabbit IgG

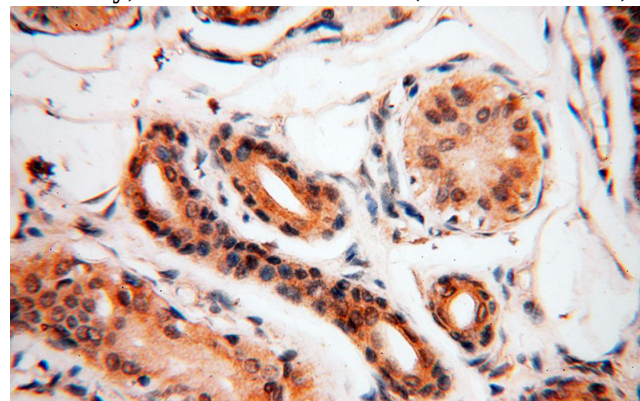
## Applications

ELISA, WB, IHC

## Dilutions

Recommended Dilution:

Immunohistochemical of paraffin-embedded human skin using Catalog No:114102(PPP2R3A antibody) at dilution of 1:100 (under 10x lens)



Immunohistochemical of paraffin-embedded human skin using Catalog No:114102(PPP2R3A

# PPP2R3A antibody



Catalog Number: 114102

---

antibody) at dilution of 1:100 (under 40x lens)