

PPP2R2C antibody



Catalog Number: 114101

Product name

PPP2R2C antibody

Specificity

Human, Mouse, Rat; other species not tested.

Antibody description

PPP2R2C Rabbit Polyclonal antibody. Positive WB detected in HeLa cells, MCF7 cells, mouse testis tissue. Positive IHC detected in human breast cancer tissue, human brain tissue, human testis tissue. Positive FC detected in MCF-7 cells. Observed molecular weight by Western-blot: 49kd

Preparation

This antibody was obtained by immunization of PPP2R2C recombinant protein (Accession Number: NM_001206996). Purification method: Antigen affinity purified.

Formulation

PBS with 0.1% sodium azide and 50% glycerol pH 7.3.

Storage

Store at -20°C. DO NOT ALIQUOT

Clonality

Polyclonal

Ig Type

Rabbit IgG

Applications

ELISA, IHC, WB, FC

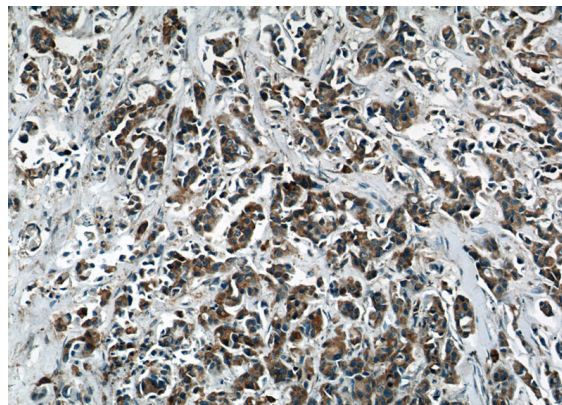
Dilutions

Recommended Dilution:

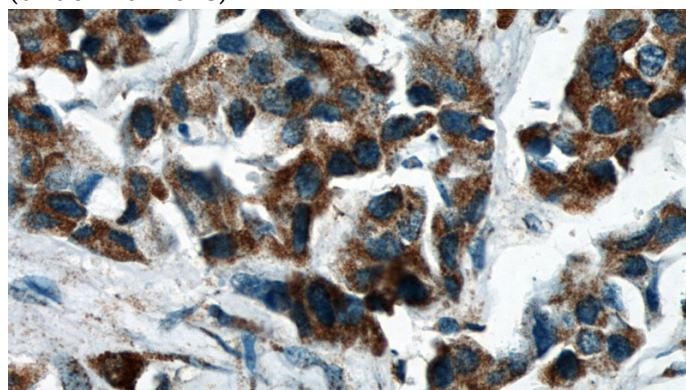
WB: 1:500-1:5000

IHC: 1:20-1:200

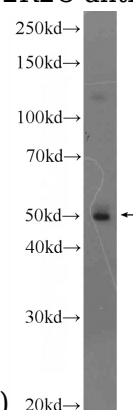
Validations



Immunohistochemical of paraffin-embedded human breast cancer using Catalog No:114101(PPP2R2C antibody) at dilution of 1:50 (under 10x lens)



Immunohistochemical of paraffin-embedded human breast cancer using Catalog No:114101(PPP2R2C antibody) at dilution of 1:50



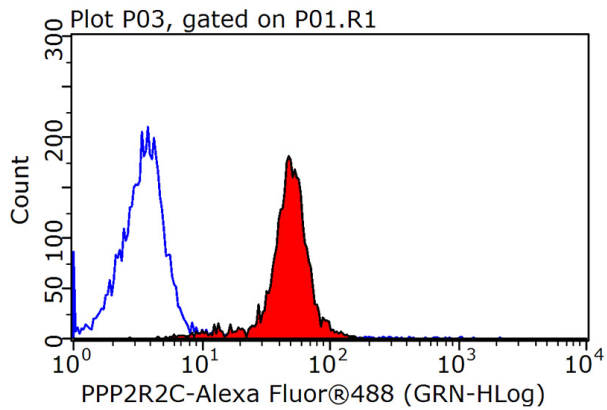
(under 40x lens)

HeLa cells were subjected to SDS PAGE followed by western blot with Catalog No:114101(PPP2R2C Antibody) at dilution of 1:1000

PPP2R2C antibody



Catalog Number: 114101



1X10⁶ MCF-7 cells were stained with 0.2ug PPP2R2C antibody (Catalog No:114101, red) and control antibody (blue). Fixed with 90% MeOH blocked with 3% BSA (30 min). Alexa Fluor 488-conjugated AffiniPure Goat Anti-Rabbit IgG(H+L) with dilution 1:1500.