

PPP1R3F antibody



Catalog Number: 114090

Product name

PPP1R3F antibody

Specificity

Human, Mouse; other species not tested.

Antibody description

PPP1R3F Rabbit Polyclonal antibody. Positive WB detected in SMMC-7721 cells. Observed molecular weight by Western-blot: 83 kDa

Preparation

This antibody was obtained by immunization of Peptide (Accession Number: NM_033215). Purification method: Antigen affinity purified.

Formulation

PBS with 0.02% sodium azide and 50% glycerol pH 7.3.

Storage

Store at -20°C. DO NOT ALIQUOT

Clonality

Polyclonal

Ig Type

Rabbit IgG

Applications

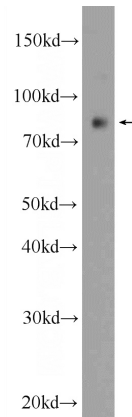
ELISA, WB

Dilutions

Recommended Dilution:

WB: 1:500-1:5000

Validations



SMMC-7721 cells were subjected to SDS PAGE followed by western blot with Catalog No:114090(PPP1R3F Antibody) at dilution of 1:1000