

# PP11 antibody

Catalog Number: 114075

## Product name

PP11 antibody

IHC: 1:20-1:200

IF: 1:50-1:500

## Specificity

Human, Mouse, Rat; other species not tested.

## Antibody description

PP11 Rabbit Polyclonal antibody. Positive IF detected in HeLa cells. Positive IHC detected in human breast cancer tissue. Positive WB detected in mouse lung tissue, HeLa cells. Observed molecular weight by Western-blot: 35-40 kDa

## Preparation

This antibody was obtained by immunization of PP11 recombinant protein (Accession Number: NM\_006025). Purification method: Antigen affinity purified.

## Formulation

PBS with 0.02% sodium azide and 50% glycerol pH 7.3.

## Storage

Store at -20°C. DO NOT ALIQUOT

## Clonality

Polyclonal

## Ig Type

Rabbit IgG

## Applications

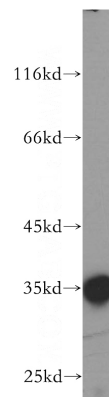
ELISA, WB, IHC, IF

## Dilutions

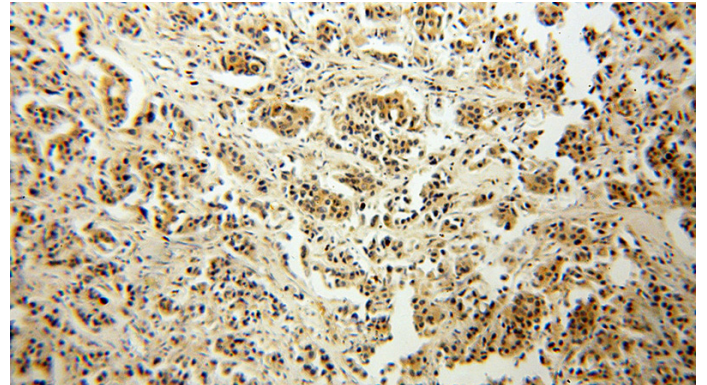
Recommended Dilution:

WB: 1:500-1:5000

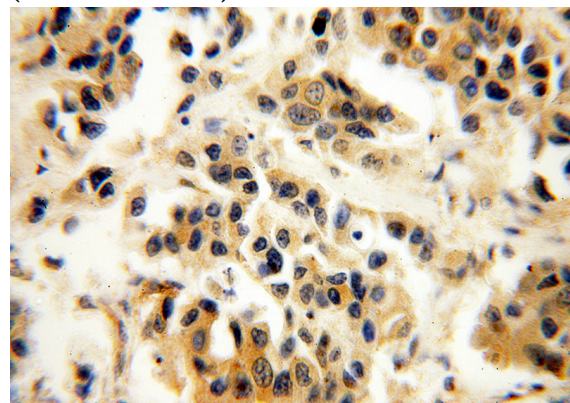
## Validations



mouse lung tissue were subjected to SDS PAGE followed by western blot with Catalog No:114075(P11 antibody) at dilution of 1:600



Immunohistochemical of paraffin-embedded human breast cancer using Catalog No:114075(P11 antibody) at dilution of 1:100 (under 10x lens)



Immunohistochemical of paraffin-embedded

# PP11 antibody



Catalog Number: 114075

---

human breast cancer using Catalog

No:114075(P11 antibody) at dilution of 1:100  
(under 40x lens)